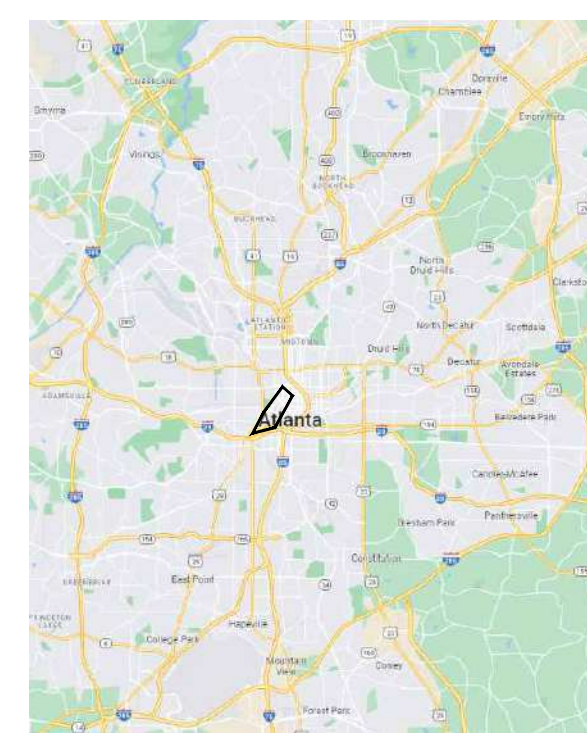


FORSYTH STREET MULTIMODAL CORRIDOR PHASE ONE



1 COUNTY LOCATION MAP
ATLANTA, GA N.T.S.

ROW - ATLDOT - REVISION#3 - TRAFFIC

CITY OF ATLANTA
DEPARTMENT OF TRANSPORTATION

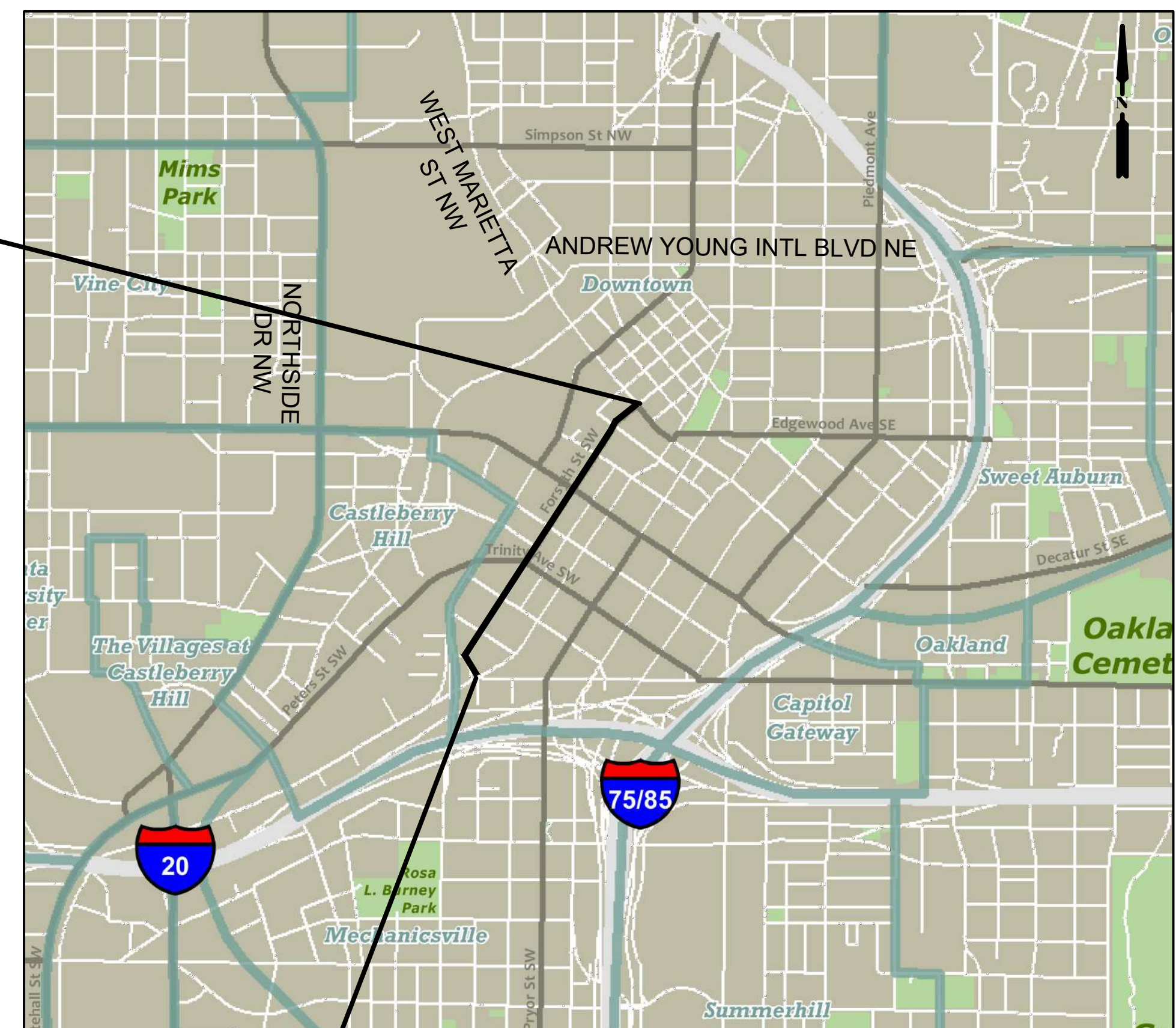
APPROVED WITH NOTES

This Building Permit does not provide permission to begin construction in the Public Right-of-Way (ROW). Any proposed work or construction activity in the ROW requires permits issued by the City of Atlanta Department ATLDOT of Transportation. Apply for the permit BEFORE starting any construction activity in the ROW. Please visit the City of Atlanta website <https://atldot.atlantaga.gov/>

Approved: Date: 03/19/2024
Traffic Engineer - JCRodriguez

Prepared For:
CITY OF ATLANTA
55 TRINITY AVE SW, ATLANTA, GA 30303
(404) 330-6000

Project Location:
FORSYTH STREET FROM MEMORIAL DRIVE SW TO MARIETTA STREET



BEGIN PROJECT
MARIETTA ST

END PROJECT
MEMORIAL DR SW

LOCATION MAP
N.T.S.

2 SHEET INDEX

DRAWING #	SHEET DESCRIPTION
G1	COVER
G2	GENERAL NOTES AND STANDARD SPECIFICATIONS
C1-C18	PAVEMENT MARKING PLANS
D1-D4	DETAILS

3 PROJECT NOTES

- THIS PROJECT WAS COMPLETED USING GEOSPATIAL DATA AND AERIAL IMAGERY FROM FULTON COUNTY.
- THE DATA, TOGETHER WITH ALL OTHER INFORMATION SHOWN ON THESE PLANS OR IN ANYWAY INDICATED THEREBY, WHETHER BY DRAWINGS OR NOTES, OR IN ANY OTHER MANNER, ARE BASED UPON FIELD INVESTIGATIONS AND ARE BELIEVED TO BE INDICATIVE OF ACTUAL CONDITIONS. HOWEVER, THE SAME ARE SHOWN AS INFORMATION ONLY, ARE NOT GUARANTEED, AND DO NOT BIND THE CITY OF ATLANTA IN ANY WAY. THE ATTENTION OF BIDDER IS SPECIFICALLY DIRECTED TO SUBSECTIONS 102.04, 102.05, AND 104.03 OF THE SPECIFICATIONS.
- ALL PROPOSED LINework FOR THIS PROJECT IS SHOWN IN COLOR. ANY LINework THAT IS SHOWN ON PLANS IN GRAYSCALE, THAT DOES NOT MATCH EXISTING CONDITIONS, IS TO BE COMPLETED UNDER A SEPARATE PROJECT.

- REVISION 1 APPROVED 02/03/2023 - REVISION 2 APPROVED 02/07/2023
- PRESENT AND USE THE APPROVED PLAN FOR ANY ADDITIONAL PERMITS REQUIRED TO WORK ON THE CITY RIGHT OF WAY.
- Please coordinate with MARTA and community transportation for any activity could impact the daily service during the construction. Please contact Mr. John Saxton at jmsaxton@AtlantaGa.Gov or directly with one of the contact people from MARTA Charles Rosa croso@itsmarta.com C: (404) 427-1833.
- 1. APPROVED WITH NOTES of this site plan is for what is requested explicitly under the plan. Any revisions to approved plans must be submitted to the Office of ATLDOT for review and approval.
- 2. Any construction or activity in the Right-of-way (ROW) (Example; sidewalk closure or street lanes closure) requires the ATLDOT-issued permit(s). Visit the City of Atlanta website <https://atldot.atlantaga.gov/> for additional information and permit requirements. Please note that only ATLDOT permit(s) allows a contractor to work in the ROW.
- 3. Consult the ATLDOT ROW Manual for additional information and requirements about performing work in the City of Atlanta (COA) ROW. The manual can be found at the www.atlantaga.gov/home/showdocument?id=44400
- 4. The Street Light Division There was no Street Lighting Review, no changes are present to the existing lighting, and no additional street lighting is proposed for this project. During this project, any streetlight that needs to be removed must be approved by the City of Atlanta Streetlight Engineer before removal. The approval of plans does not authorize removals. All Utilities impacted by the Developer Project are his responsibility to restore
- 5. Marking Striping and signs installation, inspection and coordination please contact Mr. Mark Tai 404-556-6626 MATai@AtlantaGa.Gov or Nursef Kedir nkedir@AtlantaGa.Gov
- 6. Obtain maintenance, encroachment, or easement agreement with Girma Negussie gnegussie@atlantaga.gov (404) 865-8977 for the Bike Racks or any equipment going to be on City Right of Way.

FORSYTH STREET MULTIMODAL CORRIDOR
PHASE ONE
ATLANTA DOWNTOWN IMPROVEMENT DISTRICT
FORSYTH STREET SW

REVISIONS

#	DATE	DESCRIPTION
1		
2		
3		
4		
5		

PROJECT NUMBER: 00ATL.00276.00
RELEASE DATE: 2024.03.04
DR BY: SL
CH BY: BW

100% SUBMITTAL

This drawing contains specific and proprietary information and is the property of Toole Design Group, LLC. This drawing and the information contained herein may not be scanned, copied, reproduced, modified, published, posted, uploaded, transmitted, or distributed in any way without expressed written consent from Toole Design Group, LLC for the specific project named on this sheet.
© 2021 Toole Design Group, LLC

SHEET NUMBER
1 OF 14

DRAWING NUMBER
G1

EFFORTS HAVE BEEN MADE TO PRODUCE THIS DOCUMENT USING RECYCLED MATERIALS. PLEASE CONTINUE THE CYCLE AND PROPERLY RECYCLE ALL UNNECESSARY COPIES.



Know what's below.
Call before you dig.

Severnash Engineering H:\30000\00ATL.00276.00_P_Forsyth Street Addressed Services\PRODUCTION\00ATL.00276.00_P_Notes and Details_ATL.dwg

GENERAL NOTES

GENERAL NOTES - STANDARD SIGNS

- ALL WORK SHALL BE DONE IN ACCORDANCE WITH THE CITY OF ATLANTA STANDARDS AND THE DEPARTMENT OF TRANSPORTATION OF GEORGIA STANDARD SPECIFICATIONS FOR THE CONSTRUCTION OF ROADS AND BRIDGES, 2013 EDITION AND SUPPLEMENTAL THERETO.
- UTILITY WORK COORDINATION WILL BE REQUIRED AS A PART OF THIS CONTRACT. THE CONTRACTOR SHALL BE REQUIRED TO USE THE ONE-CALL CENTER TELEPHONE NUMBER, 811 OR 1-800-282-7411, FOR THE PURPOSE OF COORDINATING THE MARKING OF UNDERGROUND UTILITIES. THE CONTRACTOR'S ATTENTION IS CALLED TO SUB-SECTION 105.06 OF THE GADOT STANDARD SPECIFICATIONS "COOPERATION WITH UTILITIES."
- THE CONTRACTOR SHALL BE RESPONSIBLE FOR COORDINATING ALL UTILITY RELOCATIONS WITH UTILITY COMPANY REPRESENTATIVES. UTILITY COMPANIES ARE REQUIRED TO RELOCATE/ADJUST NECESSARY UTILITIES AT NO COST TO THE CITY.
- INGRESS AND EGRESS SHALL BE MAINTAINED AT ALL TIMES TO ADJACENT PROPERTIES. REFER TO SUB-SECTION 107.07 OF THE GADOT STANDARD SPECIFICATIONS.
- AT LOCATIONS WHERE NEW PAVEMENT IS TO BE PLACED ADJACENT TO EXISTING PAVEMENT WITHOUT AN OVERLAY OR WHERE CURBING IS TO BE PLACED ACROSS A PAVED AREA, A JOINT SHALL BE SAWED ON A LINE ESTABLISHED BY THE CITY OF ATLANTA TO ENSURE PAVEMENT REMOVAL TO A NEAT LINE. THE COSTS FOR SAWED JOINTS, WHEN REQUIRED, SHALL BE INCLUDED IN PRICE BID FOR OTHER CONTRACT ITEMS.
- EXISTING DESIGN PLANS ARE BASED ON GIS DATA. NO TOPOGRAPHIC SURVEYS WERE PERFORMED AS PART OF THIS PROJECT. THE CONTRACTOR SHALL VERIFY EXISTING ROADWAY DIMENSIONS AND ADVISE THE CITY REPRESENTATIVE OF ANY DISCREPANCIES PRIOR TO BEGINNING WORK. WHERE EXISTING PAVEMENT MARKINGS ARE IN CONFLICT WITH THE TRAFFIC PATTERN BEING USED ON CONSTRUCTION, THE CONTRACTOR SHALL REMOVE OR OVERLAY LINES TO THE SATISFACTION OF THE CITY OF ATLANTA SUCH THAT THE LINES DO NOT CONFUSE THE TRAVELING PUBLIC. ALL REMAINING LINES OR MARKINGS SHALL BE IN ACCORDANCE WITH THE MANUAL ON UNIFORM TRAFFIC CONTROL DEVICES, LATEST EDITION, OR AS DIRECTED BY THE CITY OF ATLANTA. TRAFFIC SHALL NOT BE ALLOWED ON ANY PAVEMENT NOT PROPERLY STRIPED.
- THE CONTRACTOR'S ATTENTION IS DIRECTED TO ARTICLES 104.05 AND 107.07 OF THE STANDARD SPECIFICATIONS AND THE SPECIAL PROVISIONS FOR TRAFFIC CONTROL AND SEQUENCE OF OPERATIONS IN REGARDS TO MAINTENANCE OF TRAFFIC DURING CONSTRUCTION. CONTRACTOR SHALL PROPERLY MAINTAIN ALL PEDESTRIAN AND BICYCLE TRAFFIC IN ADDITION TO VEHICULAR TRAFFIC. SEE THE CITY OF ATLANTA PUBLIC RIGHT OF WAY MANUAL <https://atldot.atlantaga.gov/services-2/right-of-way>
- PRICE BID FOR TRAFFIC CONTROL - LUMP SUM SHALL INCLUDE, BUT IS NOT LIMITED TO, CONSTRUCTION, MAINTENANCE, AND REMOVAL OF TEMPORARY SIGNING AND PAVEMENT MARKINGS, BARRICADES, CHANNELIZING DEVICES, ETC. REQUIRED FOR MAINTENANCE OF TRAFFIC DURING CONSTRUCTION. THE CONTRACTOR WILL BE RESPONSIBLE FOR PREPARING A TRAFFIC CONTROL PLAN SHOWING THE PROPOSED MEASURES TO MANAGE TRAFFIC DURING CONSTRUCTION ACTIVITIES. THE PLAN SHALL CONFORM TO THE 2009 MANUAL OF UNIFORM TRAFFIC CONTROL DEVICES AND GEORGIA DOT SPECIFICATION 150.
 - ADDITIONAL DETOUR SIGNAGE MAY BE REQUIRED IN ORDER TO CONFORM TO THE M.U.T.C.D. NO SEPARATE PAYMENT WILL BE MADE FOR THE ADDITIONAL DETOUR SIGNAGE NOT ILLUSTRATED ON THE DETOUR PLAN.
- ALL TRAFFIC CONTROL DEVICES SHALL BE MAINTAINED BY THE CONTRACTOR SO AS NOT TO INTERFERE WITH SIGHT DISTANCES ALONG THE PROJECT CORRIDOR OR ANY ADJACENT SIDE ROAD OR DRIVEWAY.
- CITY OF ATLANTA DEPARTMENT OF TRANSPORTATION RESERVES THE RIGHT TO MODIFY THIS MAINTENANCE OF TRAFFIC PLAN AS FIELD CONDITIONS WARRANT. IF ADDITIONAL TRAFFIC CONTROL DEVICES ARE REQUIRED, THESE SHALL BE PROVIDED BY THE CONTRACTOR AT NO ADDITIONAL EXPENSE TO THE CITY.

- IT SHALL BE THE CONTRACTORS RESPONSIBILITY TO PREPARE A MAINTENANCE OF TRAFFIC PLAN FOR APPROVAL BY CITY OF ATLANTA DEPARTMENT OF TRANSPORTATION BEFORE STARTING CONSTRUCTION. PAYMENT SHALL BE INCLUDED IN THE PRICE FOR "TRAFFIC CONTROL". THE CONTRACTOR WILL NOT BE ALLOWED TO CLOSE THE ROAD DURING THE CONSTRUCTION OF THE PROJECT WITHOUT APPROVAL BY THE CITY OF ATLANTA.
- CONSTRUCTION LAYOUT WILL BE REQUIRED BY THE CONTRACTOR. ALL COST FOR THIS ITEM WILL BE INCLUDED IN THE PRICE BID FOR OTHER CONTRACT ITEMS.
- CONTRACTOR IS RESPONSIBLE FOR PRE-MARKING ALL SIGNING, STRIPING, CURB RAMPS AND DRIVEWAY LAYOUTS. CONTRACTOR SHALL NOTIFY CITY OF ATLANTA DEPARTMENT OF TRANSPORTATION A MINIMUM OF 72 HOURS AFTER PRE-MARKING FOR A REVIEW PRIOR TO PLACING PAVEMENT MARKING, SIGNS, GUARDRAIL, CURB RAMPS AND DRIVEWAYS. THE CONTRACTOR SHALL COORDINATE THIS ACTION WITH THE CITY OF ATLANTA. PRICE OF CURB RAMPS AND DETECTABLE WARNING SURFACES TO BE INCLUDED IN PRICE OF SIDEWALK. ATLDOT CONTACT INFORMATION FOR NOTICE IS ATLDOT@atlantaga.gov, 404-330-6501 OR jcrodriguez@atlantaga.gov, 404-205-9034.
- AN NOTICE OF INTENT AND UTILITY CERTIFICATION IS NOT REQUIRED FOR THIS PROJECT.
- THE CONTRACTOR SHALL BE RESPONSIBLE FOR REMOVING, RELOCATING, AND MAINTAINING THE PROPERTY OWNER'S MAILBOX TO AN AREA OUTSIDE CONSTRUCTION LIMITS DURING THE LENGTH OF THE CONTRACT. THE LOCATION OF THE BOX SHOULD BE CONVENIENT TO BOTH THE MAIL CARRIER AND THE PATRON, YET NOT INTERFERE WITH PROPOSED WORK. IT MAY BE NECESSARY FOR THE CONTRACTOR TO CONFER WITH THE POST OFFICE SERVING THE AREA. ALL COST INCURRED FOR COMPLIANCE WITH THESE REQUIREMENTS SHALL BE INCLUDED IN THE PRICE BID.
- THE LOCATION OF ALL EXISTING UTILITIES MAY NOT BE SHOWN, PRESENCE AND LOCATIONS OF ALL UTILITIES WITHIN THE LIMITS OF WORK MUST BE DETERMINED BY THE CONTRACTOR PRIOR TO COMMENCEMENT OF CONSTRUCTION ACTIVITY. THE LIMIT OF WORK MUST BE DETERMINED BY THE CONTRACTOR PRIOR TO THE COMMENCEMENT OF CONSTRUCTION ACTIVITY. THE CONTRACTOR SHALL BE RESPONSIBLE FOR IDENTIFYING AND CONTACTING THE CONTROLLING AUTHORITIES AND/OR UTILITY COMPANIES RELATIVE TO THE LOCATIONS AND ELEVATIONS ON THEIR LINES. THE CONTRACTOR SHALL KEEP A RECORD OF ANY DISCREPANCIES OR CHANGES IN THE LOCATIONS OF ANY UTILITIES SHOWN OR ENCOUNTERED DURING CONSTRUCTION. AND DISCREPANCIES SHALL BE REPORTED TO THE CITY OF ATLANTA. ANY DAMAGE RESULTING FROM THE FAILURE OF THE CONTRACTOR TO MAKE THESE DETERMINATIONS AND CONTACTS SHALL BE BORNE BY THE CONTRACTOR.

- ALL STANDARD HIGHWAY SIGNS SHALL BE FABRICATED AND ERECTED IN ACCORDANCE WITH THE DETAILS SHOWN IN THE PLANS, THE MANUAL ON UNIFORM TRAFFIC CONTROL DEVICES, CURRENT EDITION, AND THE GEORGIA SPECIFICATIONS, SUPPLEMENTAL SPECIFICATIONS, AND/OR SPECIAL PROVISIONS.
- SIGN ERECTION LOCATIONS ARE APPROXIMATE AND MAY BE ADJUSTED TO MEET FIELD CONDITIONS WHERE NECESSARY, BUT SHALL BE WITHIN THE LIMITATIONS SET FORTH IN THE MANUAL ON UNIFORM TRAFFIC CONTROL DEVICES, CURRENT EDITION. NO SIGN LOCATION SHALL BE CHANGED BY THE CONTRACTOR WITHOUT PRIOR APPROVAL FROM THE CITY.
- ALL STANDARD HIGHWAY SIGNS SHALL BE ERECTED AT A HEIGHT OF 7 FEET ABOVE THE NORMAL EDGE OF PAVEMENT TO THE BOTTOM OF THE SIGN OR ASSEMBLY,
- HORIZONTAL CLEARANCE FOR STANDARD HIGHWAY SIGNS ON ALL ROADWAYS SHALL BE 6 FEET FROM THE EDGE OF THE PAVED SHOULDER OR 12 FEET FROM THE NORMAL EDGE OF PAVEMENT TO THE NEARER EDGE OF THE SIGN(S), WHICHEVER IS GREATER. THE HORIZONTAL CLEARANCE IN NON-MOUNTABLE CURB SECTIONS SHALL BE AT LEAST 2 FEET FROM THE CURB FACE TO THE NEARER EDGE OF THE SIGN(S).
 - HORIZONTAL CLEARANCE FOR STANDARD HIGHWAY SIGNS MOUNTED BEHIND GUARD RAIL SHALL BE 6 FEET FROM THE FACE OF THE GUARD RAIL TO THE NEARER EDGE OF THE SIGN(S).
 - SINGLE PLATE, HORIZONTAL RECTANGULAR SIGNS OVER 48 INCHES IN WIDTH SHALL BE MOUNTED ON TWO POSTS WITH 2 EACH 2 INCH x 1/2 INCH x (WIDTH OF SIGN) ALUMINUM OR GALVANIZED STEEL STRAPS. THE STRAPS SHALL BE FLUSH WITH THE BACK OF THE SIGN WITH ONE EACH ACROSS THE TOP AND BOTTOM OF THE SIGN. THE CENTERLINE OF EACH POST SHALL BE INSET 1/6TH OF THE SIGN WIDTH FROM THE EDGE OF THE SIGN. SIGN PLATE BOLT HOLES SHALL BE 3/8 INCH DIAMETER, DRILLED OR PUNCHED, AS SHOWN ON THE SIGN PLATE DETAILS.
- EACH 42 OR 48 INCH WIDE x 18 OR 24 INCH HIGH SIGN REQUIRES ONE 2 INCH x 1/2 INCH x (WIDTH OF SIGN) ALUMINUM OR GALVANIZED STEEL STRAP LOCATED IN THE CENTER OF THE SIGN AND FLUSH WITH THE BACK OF THE SIGN.
- SIGN ASSEMBLIES SHALL BE MOUNTED ON ALUMINUM OR GALVANIZED STEEL STRAP FOR DETAILS AND STRAP SPECIFICATIONS REFER TO GDOT SIGN ASSEMBLY - TYPICAL FRAMING DETAIL T-2.
- TYPE 9 (HIGH INTENSITY) REFLECTIVE SHEETING SHALL BE USED FOR ALL STANDARD HIGHWAY SIGNS REQUIRING REFLECTORIZED BACKGROUNDS EXCEPT AS SPECIFIED BELOW OR SPECIFIED OTHERWISE IN THE PLANS. EITHER CLASS 1 OR CLASS 2 ADHESIVE BACKING IS PERMISSIBLE.
- TYPE 11 (VERY HIGH INTENSITY) REFLECTIVE SHEETING SHALL BE USED FOR ALL RED SERIES SIGNS (R1-1, R1-2, R1-3P, R5-1, R5-1A, R5-1B).
- TYPE 11 (VERY HIGH INTENSITY) FLUORESCENT YELLOW GREEN REFLECTIVE SHEETING SHALL BE USED FOR SCHOOL ZONE (S1-1, S2-1, S3-1, S4-3, AND THE TOP PORTION OF THE S5-1) SIGNS, BICYCLE CROSSING (W11-1) SIGNS, AND PEDESTRIAN CROSSING (W11-2 AND W11A-2) SIGNS. SIGNS WITHIN THE SAME ASSEMBLY AS THE SCHOOL ZONE SIGNS SPECIFICALLY LISTED ABOVE AND ALL REGULATORY SIGNS PLACED AS PART OF THE SCHOOL ZONE SIGNING SHALL HAVE TYPE IX (VERY HIGH INTENSITY) REFLECTIVE SHEETING BACKGROUNDS OF THE APPROPRIATE COLOR.
- TYPE 11 (VERY HIGH INTENSITY) FLUORESCENT YELLOW REFLECTIVE SHEETING SHALL BE USED FOR ALL WARNING SIGNS.
- A 1/2 INCH MINIMUM AIR SPACE SHALL BE REQUIRED BETWEEN ALL SIGN PLATES WITHIN AN ASSEMBLY.

- WHERE SIGNS WITHIN AN ASSEMBLY EXTEND BELOW THE STANDARD MOUNTING HOLES ON THE POST(S), ADDITIONAL 3/8 INCH DIAMETER HOLE(S), DRILLED OR PUNCHED, SHALL BE REQUIRED TO PROPERLY MOUNT THE ASSEMBLY.
- CONTRACTOR TO LOCATE AND REVIEW ALL EXISTING SIGNS AND DETERMINE IF THEY ARE APPLICABLE OR IF THEY NEED TO BE REMOVED, RELOCATED, OR REPLACED. CONTRACTOR TO ALSO DETERMINE AND COORDINATE IF REMOVAL OR RELOCATION OF EXISTING PARKING METERS IS NEEDED WITH CALVIN WATTS AT (404)330-6216 OR CLWatts@atlantaga.gov. THE CITY'S SERVICE PROVIDER THAT WILL REMOVE PARKING METERS AND THEIR ASSOCIATED SIGNAGE REQUIRES A 72 HOUR NOTICE AND IS WEATHER PERMITTING.
- SPEED LIMIT SIGNS (R2-1) READING 35 MPH TO BE REPLACED BY ONES READING 25 MPH ON EXISTING POSTS OR POLES
- ALL PARKING SIGNAGE LOCATED IN PROPOSED BIKE LANES TO BE REPLACED BY NO PARKING BIKE LANE (R7-9) SIGNS ON EXISTING POSTS OR POLES

FORSYTH STREET MULTIMODAL CORRIDOR
PHASE ONE
ATLANTA DOWNTOWN IMPROVEMENT DISTRICT
FORSYTH STREET SW

REVISIONS

#	DATE	DESCRIPTION
1		
2		
3		
4		
5		

PROJECT NUMBER: 00ATL.00276.00
RELEASE DATE: 2024.03.04
DR BY: SL
CH BY: BW

100% SUBMITTAL

This drawing contains specific and proprietary information and is the property of Toole Design Group, LLC. This drawing and the information contained herein may not be scanned, copied, reproduced, modified, published, posted, uploaded, transmitted, or distributed in any way without expressed written consent from Toole Design Group, LLC for the specific project named on this sheet.
© 2021 Toole Design Group, LLC

SHEET NUMBER

2 OF 14

DRAWING NUMBER

G2

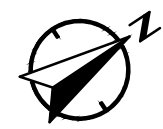
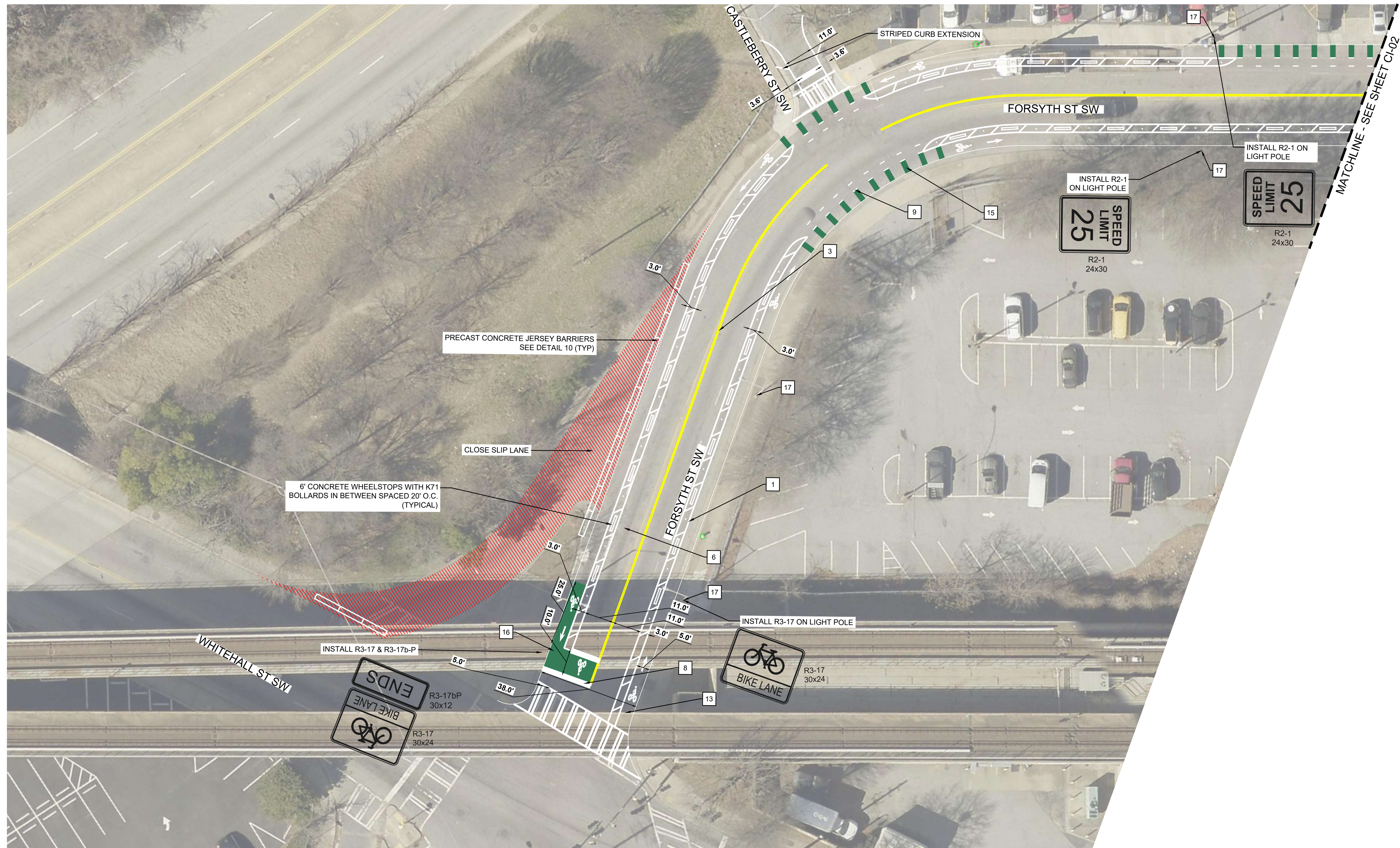


EFFORTS HAVE BEEN MADE TO PRODUCE THIS DOCUMENT USING RECYCLED MATERIALS. PLEASE CONTINUE THE CYCLE AND PROPERLY RECYCLE ALL UNNECESSARY COPIES.



EFFORTS HAVE BEEN MADE TO PRODUCE THIS DOCUMENT USING RECYCLED MATERIALS. PLEASE CONTINUE THE CYCLE AND PROPERLY RECYCLE ALL UNNECESSARY COPIES.

Savannah, Georgia
 H:\0000000001_00276_00_P_Forsyth Street Addressed Services\PRODUCTION\00276_00_P_Civil Improvements_Alt.dwg
 11/10/2024 10:41:00 AM
 P: Forsyth Street Addressed Services\PRODUCTION\00276_00_P_Civil Improvements_Alt.dwg



FORSYTH STREET MULTIMODAL CORRIDOR
PHASE ONE
 ATLANTA DOWNTOWN IMPROVEMENT DISTRICT
 FORSYTH STREET SW
 CIVIL IMPROVEMENTS PLAN

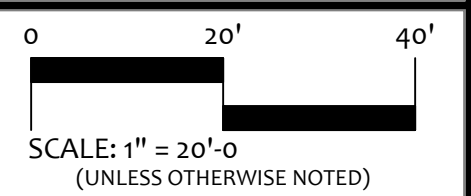
REVISIONS

#	DATE	DESCRIPTION
1		
2		
3		
4		
5		

PROJECT NUMBER: 00ATL_00276_00
 RELEASE DATE: 2024.03.04
 DR BY: SL
 CR BY: BW

100% SUBMITTAL

This drawing contains specific and proprietary information and is the property of Toole Design Group, LLC. This drawing and the information contained herein may not be scanned, copied, reproduced, modified, published, posted, uploaded, transmitted, or distributed in any way without expressed written consent from Toole Design Group, LLC for the specific project named on this sheet.
 © 2021 Toole Design Group, LLC



SHEET NUMBER

3 OF 14

DRAWING NUMBER

CI-01

CONSTRUCTION NOTES (CIVIL):

- | | | | |
|----|--|----|---|
| 01 | INSTALL 5" SOLID WHITE | 10 | INSTALL BIKE SYMBOL PAVEMENT MARKING |
| 02 | INSTALL 5" DASHED WHITE | 11 | INSTALL SHARED LANE PAVEMENT MARKING |
| 03 | INSTALL 5" DOUBLE SOLID YELLOW WITH RAISED PAVEMENT MARKERS SPACED 40" | 12 | INSTALL WORD PAVEMENT MARKING |
| 04 | INSTALL 6" SOLID WHITE | 13 | INSTALL BIKE SYMBOL AND ARROW PAVEMENT MARKING |
| 05 | INSTALL 5" DASHED DOUBLE YELLOW | 14 | INSTALL TURN ARROW PAVEMENT MARKING |
| 06 | INSTALL 8" SOLID WHITE | 15 | INSTALL GREEN MMA CONFLICT PAVEMENT MARKING |
| 07 | INSTALL 12" SOLID WHITE | 16 | INSTALL GREEN BIKE LANE PAVEMENT MARKING |
| 08 | INSTALL 24" SOLID WHITE | 17 | REPLACE PARKING SIGN WITH "NO PARKING BIKE LANE" R7-9 |
| 09 | INSTALL 6" DASHED WHITE | 18 | INSTALL 12" BIKE YIELD MARKINGS |

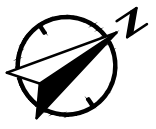
LEGEND:

- | | | | |
|--|--|--|-------------------|
| | VARIABLE DEPTH MILLING AND OVERLAY BETWEEN TRINITY AVE AND RAILROAD BRIDGE | | SLIP LANE CLOSURE |
| | MMA GREEN BIKE LANE STRIPING | | FIRE HYDRANT |

NOTES:

- K-71 BOLLARDS AND CONCRETE WHEEL STOPS TO BE INSTALLED BY OTHERS (ADID)
- ALL PAVEMENT MARKINGS ON FORSYTH STREET FROM MITCHELL STREET SW TO DR MLK JR DR SW TO BE STANDARD TRAFFIC PAINT





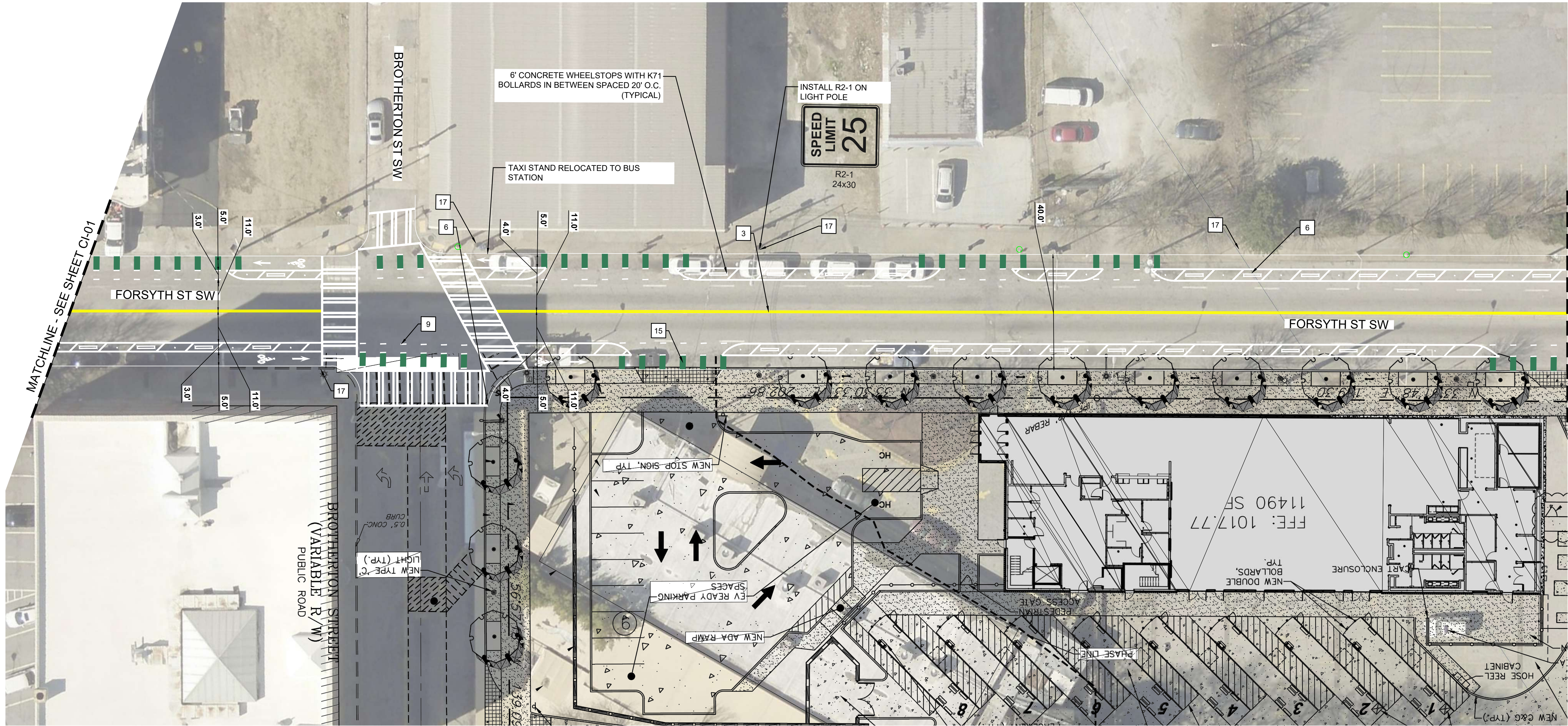
**FORSYTH STREET MULTIMODAL CORRIDOR
PHASE ONE
ATLANTA DOWNTOWN IMPROVEMENT DISTRICT
FORSYTH STREET SW**
CIVIL IMPROVEMENTS PLAN



EFFORTS HAVE BEEN MADE TO PRODUCE THIS DOCUMENT USING RECYCLED MATERIALS.
PLEASE CONTINUE THE CYCLE AND PROPERLY RECYCLE ALL UNNECESSARY COPIES.



S:\projects\2024\03\ATL_00276_00_P1_Forsyth Street Addressed\Reviews\PRODUCTION\CD\PLANS\00ATL_00276_00_P1_C1-01 CIVIL IMPROVEMENTS_Alt.dwg
H:\000000\ATL_00276_00_P1_Forsyth Street Addressed\Reviews\PRODUCTION\CD\PLANS\00ATL_00276_00_P1_C1-01 CIVIL IMPROVEMENTS_Alt.dwg



CONSTRUCTION NOTES (CIVIL):

- | | | | |
|----|--|----|---|
| 01 | INSTALL 5" SOLID WHITE | 10 | INSTALL BIKE SYMBOL PAVEMENT MARKING |
| 02 | INSTALL 5" DASHED WHITE | 11 | INSTALL SHARED LANE PAVEMENT MARKING |
| 03 | INSTALL 5" DOUBLE SOLID YELLOW WITH RAISED PAVEMENT MARKERS SPACED 40" | 12 | INSTALL WORD PAVEMENT MARKING |
| 04 | INSTALL 6" SOLID WHITE | 13 | INSTALL BIKE SYMBOL AND ARROW PAVEMENT MARKING |
| 05 | INSTALL 5" DASHED DOUBLE YELLOW | 14 | INSTALL TURN ARROW PAVEMENT MARKING |
| 06 | INSTALL 8" SOLID WHITE | 15 | INSTALL GREEN MMA CONFLICT PAVEMENT MARKING |
| 07 | INSTALL 12" SOLID WHITE | 16 | INSTALL GREEN BIKE LANE PAVEMENT MARKING |
| 08 | INSTALL 24" SOLID WHITE | 17 | REPLACE PARKING SIGN WITH "NO PARKING BIKE LANE" R7-9 |
| 09 | INSTALL 6" DASHED WHITE | 18 | INSTALL 12" BIKE YIELD MARKINGS |

LEGEND:

- VARIABLE DEPTH MILLING AND OVERLAY BETWEEN TRINITY AVE AND RAILROAD BRIDGE
- SLIP LANE CLOSURE
- MMA GREEN BIKE LANE STRIPING
- FIRE HYDRANT

NOTES:

1. K-71 BOLLARDS AND CONCRETE WHEEL STOPS TO BE INSTALLED BY OTHERS (ADID)
2. ALL PAVEMENT MARKINGS ON FORSYTH STREET FROM MITCHELL STREET SW TO DR MLK JR DR SW TO BE STANDARD TRAFFIC PAINT



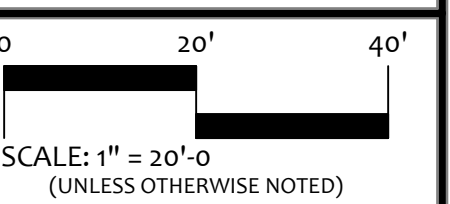
REVISIONS

#	DATE	DESCRIPTION
1		
2		
3		
4		
5		

PROJECT NUMBER: 00ATL_00276_00
RELEASE DATE: 2024.03.04
DR BY: SL
CH BY: BW

100% SUBMITTAL

This drawing contains specific and proprietary information and is the property of Toole Design Group, LLC. This drawing and the information contained herein may not be scanned, copied, reproduced, modified, published, posted, uploaded, transmitted, or distributed in any way without expressed written consent from Toole Design Group, LLC for the specific project named on this sheet.
© 2021 Toole Design Group, LLC



SHEET NUMBER
4 OF 14
DRAWING NUMBER
CI-02

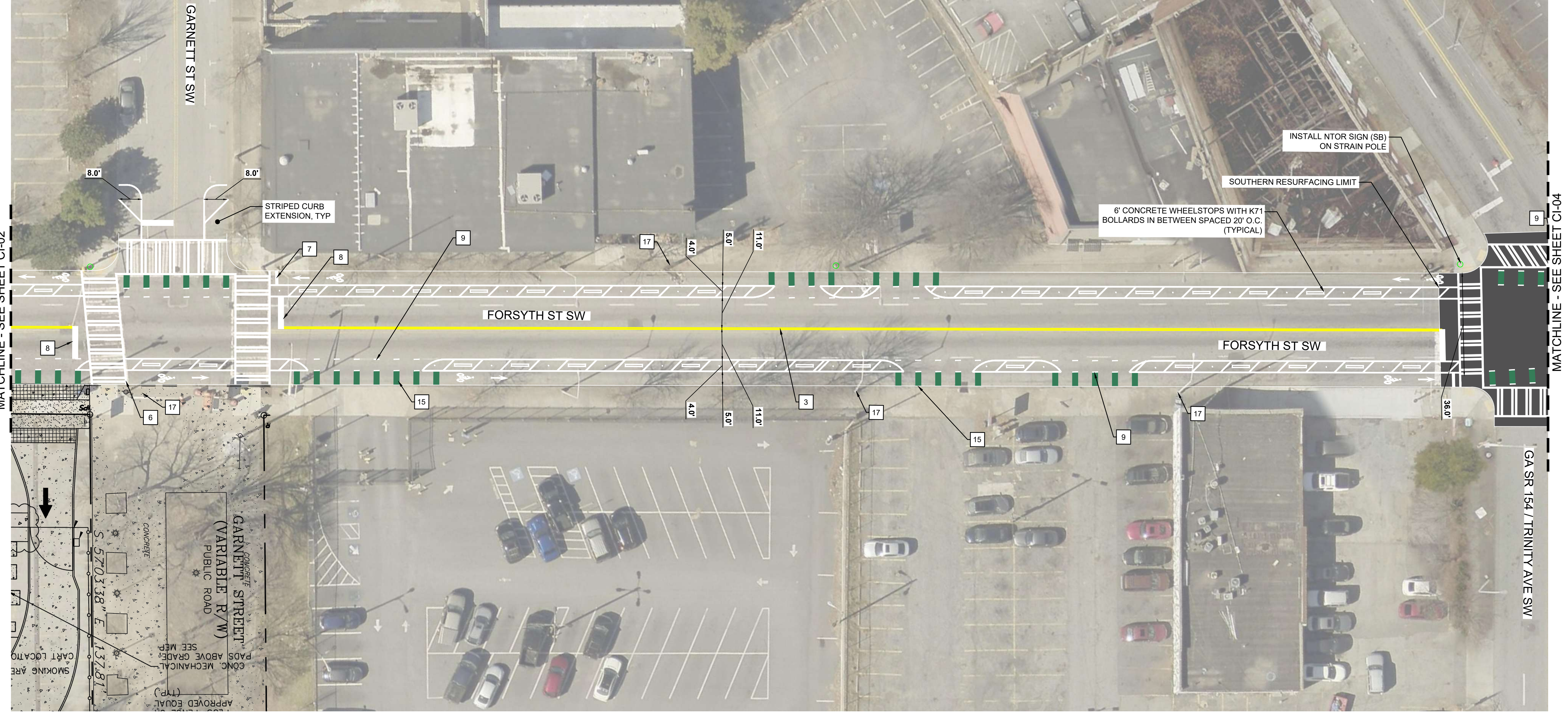
EFFORTS HAVE BEEN MADE TO PRODUCE THIS DOCUMENT USING RECYCLED MATERIALS.
PLEASE CONTINUE THE CYCLE AND PROPERLY RECYCLE ALL UNNECESSARY COPIES.



Severin Ljunggren
H:\3000\3001\3001\01276001_P_Forsyth Street Addressed Views\PRODUCTION\CADD\ANSI\DWG_0276_00_P_CIVIL IMPROVEMENTS_ALT.dwg



**FORSYTH STREET MULTIMODAL CORRIDOR
PHASE ONE**
ATLANTA DOWNTOWN IMPROVEMENT DISTRICT
FORSYTH STREET SW
CIVIL IMPROVEMENTS PLAN



CONSTRUCTION NOTES (CIVIL):

- | | | | |
|----|--|----|---|
| 01 | INSTALL 5" SOLID WHITE | 10 | INSTALL BIKE SYMBOL PAVEMENT MARKING |
| 02 | INSTALL 5" DASHED WHITE | 11 | INSTALL SHARED LANE PAVEMENT MARKING |
| 03 | INSTALL 5" DOUBLE SOLID YELLOW WITH RAISED PAVEMENT MARKERS SPACED 40" | 12 | INSTALL WORD PAVEMENT MARKING |
| 04 | INSTALL 6" SOLID WHITE | 13 | INSTALL BIKE SYMBOL AND ARROW PAVEMENT MARKING |
| 05 | INSTALL 5" DASHED DOUBLE YELLOW | 14 | INSTALL TURN ARROW PAVEMENT MARKING |
| 06 | INSTALL 8" SOLID WHITE | 15 | INSTALL GREEN MMA CONFLICT PAVEMENT MARKING |
| 07 | INSTALL 12" SOLID WHITE | 16 | INSTALL GREEN BIKE LANE PAVEMENT MARKING |
| 08 | INSTALL 24" SOLID WHITE | 17 | REPLACE PARKING SIGN WITH "NO PARKING BIKE LANE" R7-9 |
| 09 | INSTALL 6" DASHED WHITE | 18 | INSTALL 12" BIKE YIELD MARKINGS |

LEGEND:

- | | | | |
|--|--|--|-------------------|
| | VARIABLE DEPTH MILLING AND OVERLAY BETWEEN TRINITY AVE AND RAILROAD BRIDGE | | SLIP LANE CLOSURE |
| | MMA GREEN BIKE LANE STRIPING | | FIRE HYDRANT |

NOTES:

- K-71 BOLLARDS AND CONCRETE WHEEL STOPS TO BE INSTALLED BY OTHERS (ADID)
- ALL PAVEMENT MARKINGS ON FORSYTH STREET FROM MITCHELL STREET SW TO DR MLK JR DR SW TO BE STANDARD TRAFFIC PAINT



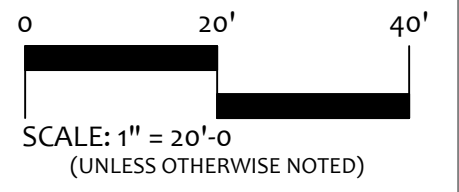
REVISIONS

#	DATE	DESCRIPTION
1		
2		
3		
4		
5		

PROJECT NUMBER: 00ATL.00276.00
RELEASE DATE: 2024.03.04
DR BY: SL
CR BY: BW

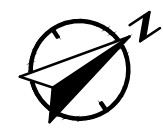
100% SUBMITTAL

This drawing contains specific and proprietary information and is the property of Toole Design Group, LLC. This drawing and the information contained herein may not be scanned, copied, reproduced, modified, published, posted, uploaded, transmitted, or distributed in any way without expressed written consent from Toole Design Group, LLC for the specific project named on this sheet.
© 2021 Toole Design Group, LLC

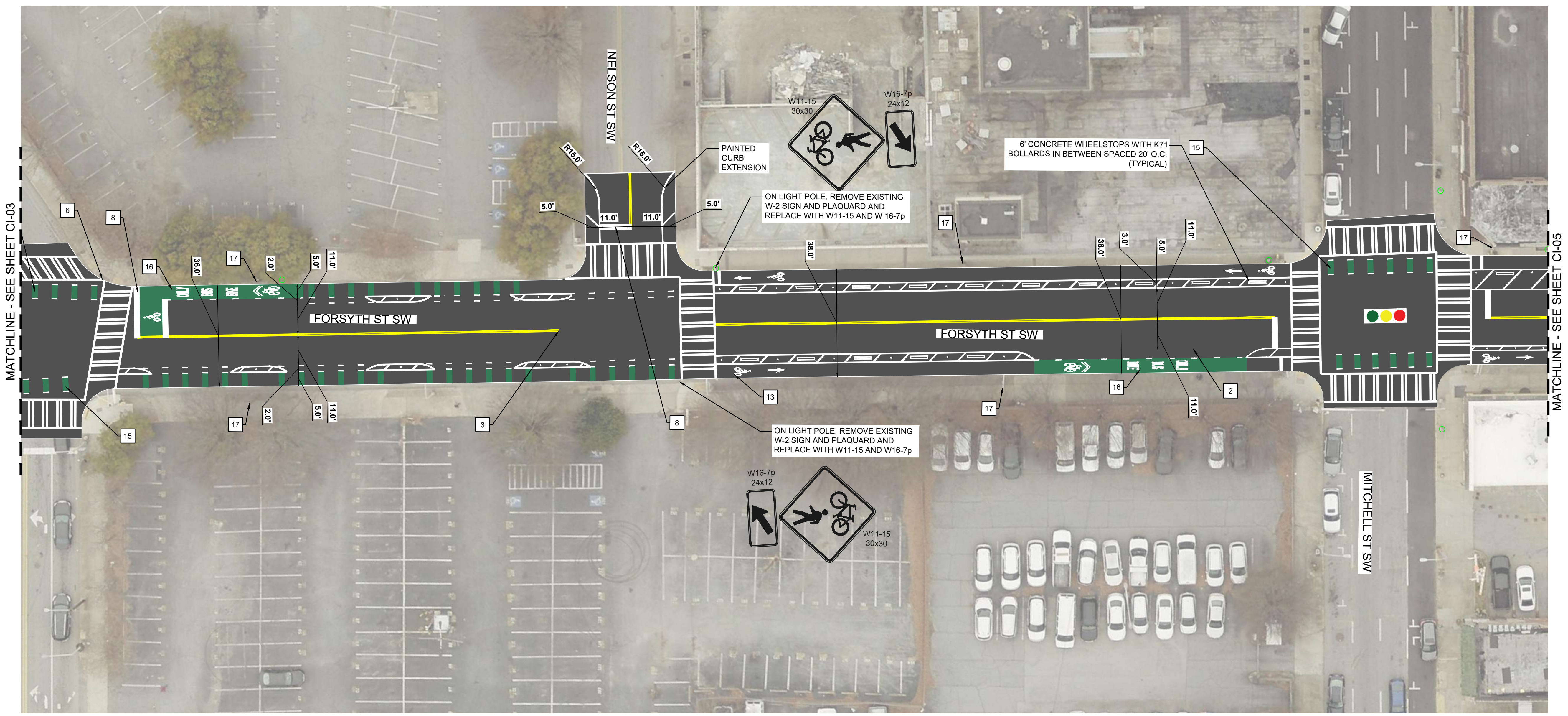


SHEET NUMBER
5 OF 14

DRAWING NUMBER
CI-03



**FORSYTH STREET MULTIMODAL CORRIDOR
PHASE ONE**
ATLANTA DOWNTOWN IMPROVEMENT DISTRICT
FORSYTH STREET SW
CIVIL IMPROVEMENTS PLAN



EFFORTS HAVE BEEN MADE TO PRODUCE THIS DOCUMENT USING RECYCLED MATERIALS.
PLEASE CONTINUE THE CYCLE AND PROPERLY RECYCLE ALL UNNECESSARY COPIES.



S:\projects\2024\03\atl_00276_00_P1_Forsyth Street Addressed Services\PRODUCTION\CADD\ANSI\DWG_00276_00_P1_C1-04 CIVIL IMPROVEMENTS_Alt.dwg
H:\3000\00276_00_P1_Forsyth Street Addressed Services\PRODUCTION\CADD\ANSI\DWG_00276_00_P1_C1-04 CIVIL IMPROVEMENTS_Alt.dwg

CONSTRUCTION NOTES (CIVIL):

- | | | | |
|----|--|----|---|
| 01 | INSTALL 5" SOLID WHITE | 10 | INSTALL BIKE SYMBOL PAVEMENT MARKING |
| 02 | INSTALL 5" DASHED WHITE | 11 | INSTALL SHARED LANE PAVEMENT MARKING |
| 03 | INSTALL 5" DOUBLE SOLID YELLOW WITH RAISED PAVEMENT MARKERS SPACED 40" | 12 | INSTALL WORD PAVEMENT MARKING |
| 04 | INSTALL 6" SOLID WHITE | 13 | INSTALL BIKE SYMBOL AND ARROW PAVEMENT MARKING |
| 05 | INSTALL 5" DASHED DOUBLE YELLOW | 14 | INSTALL TURN ARROW PAVEMENT MARKING |
| 06 | INSTALL 8" SOLID WHITE | 15 | INSTALL GREEN MMA CONFLICT PAVEMENT MARKING |
| 07 | INSTALL 12" SOLID WHITE | 16 | INSTALL GREEN BIKE LANE PAVEMENT MARKING |
| 08 | INSTALL 24" SOLID WHITE | 17 | REPLACE PARKING SIGN WITH "NO PARKING BIKE LANE" R7-9 |
| 09 | INSTALL 6" DASHED WHITE | 18 | INSTALL 12" BIKE YIELD MARKINGS |



LEGEND:

- | | | | |
|--|--|--|-------------------|
| | VARIABLE DEPTH MILLING AND OVERLAY BETWEEN TRINITY AVE AND RAILROAD BRIDGE | | SLIP LANE CLOSURE |
| | MMA GREEN BIKE LANE STRIPING | | FIRE HYDRANT |

NOTES:

- K-71 BOLLARDS AND CONCRETE WHEEL STOPS TO BE INSTALLED BY OTHERS (ADID)
- ALL PAVEMENT MARKINGS ON FORSYTH STREET FROM MITCHELL STREET SW TO DR MLK JR DR SW TO BE STANDARD TRAFFIC PAINT

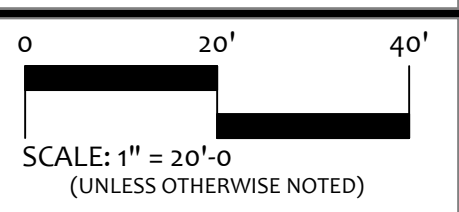
REVISIONS

#	DATE	DESCRIPTION
1		
2		
3		
4		
5		

PROJECT NUMBER: 00ATL_00276_00
RELEASE DATE: 2024.03.04
DR BY: SL
CH BY: BW

100% SUBMITTAL

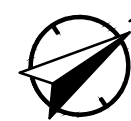
This drawing contains specific and proprietary information and is the property of Toole Design Group, LLC. This drawing and the information contained herein may not be scanned, copied, reproduced, modified, published, posted, uploaded, transmitted, or distributed in any way without expressed written consent from Toole Design Group, LLC for the specific project named on this sheet.
© 2021 Toole Design Group, LLC



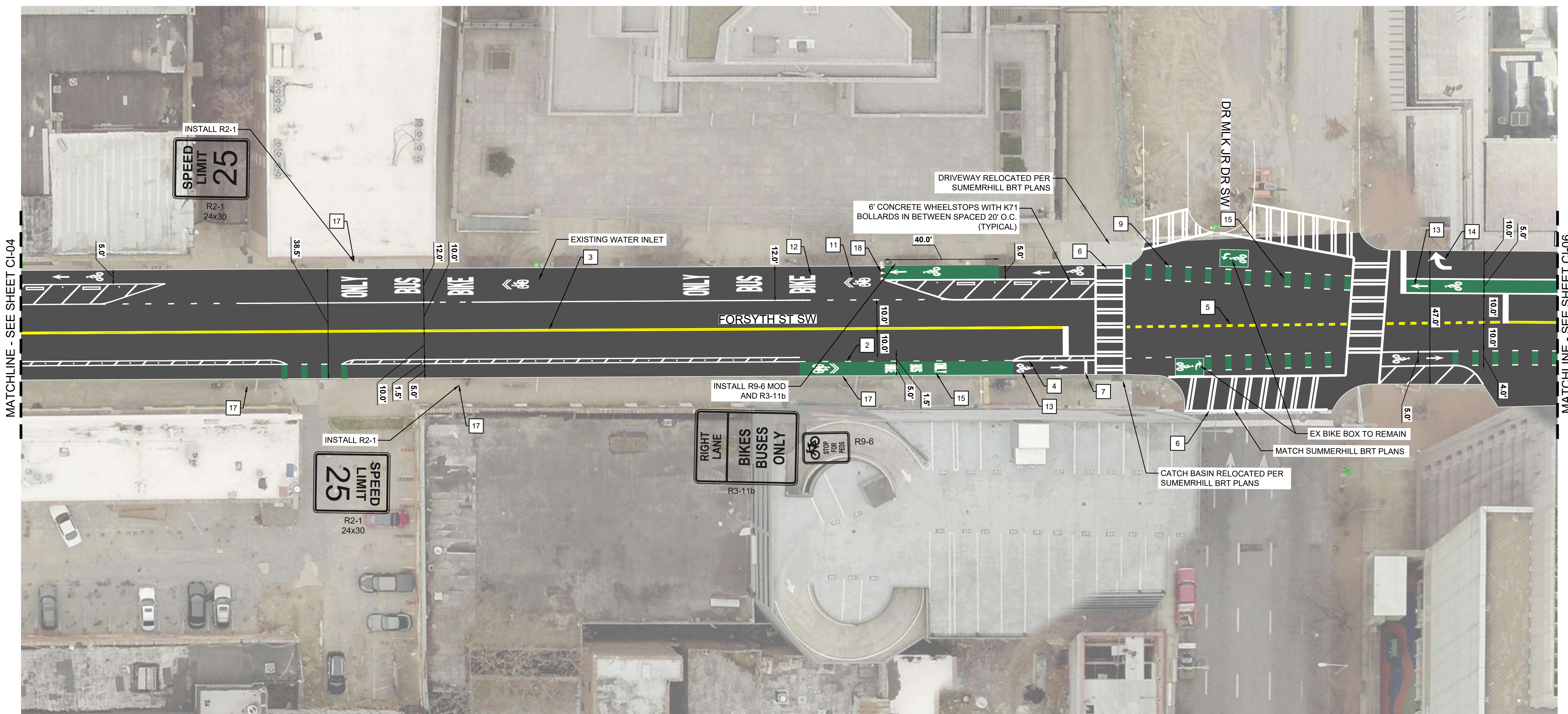
SHEET NUMBER
6 OF 14

DRAWING NUMBER
CI-04

EFFORTS HAVE BEEN MADE TO PRODUCE THIS DOCUMENT USING RECYCLED MATERIALS. PLEASE CONTINUE THE CYCLE AND PROPERLY RECYCLE ALL UNNECESSARY COPIES.



FORSYTH STREET MULTIMODAL CORRIDOR
PHASE ONE
 ATLANTA DOWNTOWN IMPROVEMENT DISTRICT
 FORSYTH STREET SW
 CIVIL IMPROVEMENTS PLAN



S:\projects\2024\00ATL_00276_00_P1_Forsyth Street Addressed Review\PRODUCTION\CI-05_F_Civil Improvements_Alt.dwg
H:\30000\00ATL_00276_00_P1_Forsyth Street Addressed Review\PRODUCTION\CI-05_F_Civil Improvements_Alt.dwg

CONSTRUCTION NOTES (CIVIL):

- 01 INSTALL 5" SOLID WHITE
- 02 INSTALL 5" DASHED WHITE
- 03 INSTALL 5" DOUBLE SOLID YELLOW WITH RAISED PAVEMENT MARKERS SPACED 40'
- 04 INSTALL 6" SOLID WHITE
- 05 INSTALL 5" DASHED DOUBLE YELLOW
- 06 INSTALL 8" SOLID WHITE
- 07 INSTALL 12" SOLID WHITE
- 08 INSTALL 24" SOLID WHITE
- 09 INSTALL 6" DASHED WHITE
- 10 INSTALL BIKE SYMBOL PAVEMENT MARKING
- 11 INSTALL SHARED LANE PAVEMENT MARKING
- 12 INSTALL WORD PAVEMENT MARKING
- 13 INSTALL BIKE SYMBOL AND ARROW PAVEMENT MARKING
- 14 INSTALL TURN ARROW PAVEMENT MARKING
- 15 INSTALL GREEN MMA CONFLICT PAVEMENT MARKING
- 16 INSTALL GREEN BIKE LANE PAVEMENT MARKING
- 17 REPLACE PARKING SIGN WITH "NO PARKING BIKE LANE" R7-9
- 18 INSTALL 12" BIKE YIELD MARKINGS

LEGEND:

- VARIABLE DEPTH MILLING AND OVERLAY BETWEEN TRINITY AVE AND RAILROAD BRIDGE
- MMA GREEN BIKE LANE STRIPING
- SLIP LANE CLOSURE
- FIRE HYDRANT

NOTES:

1. K-71 BOLLARDS AND CONCRETE WHEEL STOPS TO BE INSTALLED BY OTHERS (ADID)
2. ALL PAVEMENT MARKINGS ON FORSYTH STREET FROM MITCHELL STREET SW TO DR MLK JR DR SW TO BE STANDARD TRAFFIC PAINT



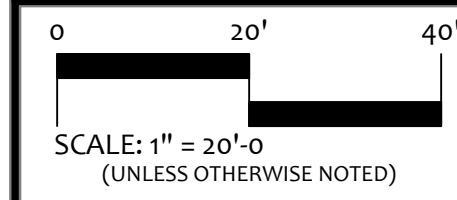
REVISIONS

#	DATE	DESCRIPTION
1		
2		
3		
4		
5		

PROJECT NUMBER: 00ATL_00276_00
RELEASE DATE: 2024.03.04
DR BY: SL
CH BY: BW

100% SUBMITTAL

This drawing contains specific and proprietary information and is the property of Toole Design Group, LLC. This drawing and the information contained herein may not be scanned, copied, reproduced, modified, published, posted, uploaded, transmitted, or distributed in any way without expressed written consent from Toole Design Group, LLC for the specific project named on this sheet.
© 2021 Toole Design Group, LLC



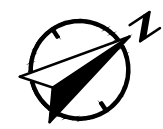
SHEET NUMBER
7 OF 14

DRAWING NUMBER
CI-05

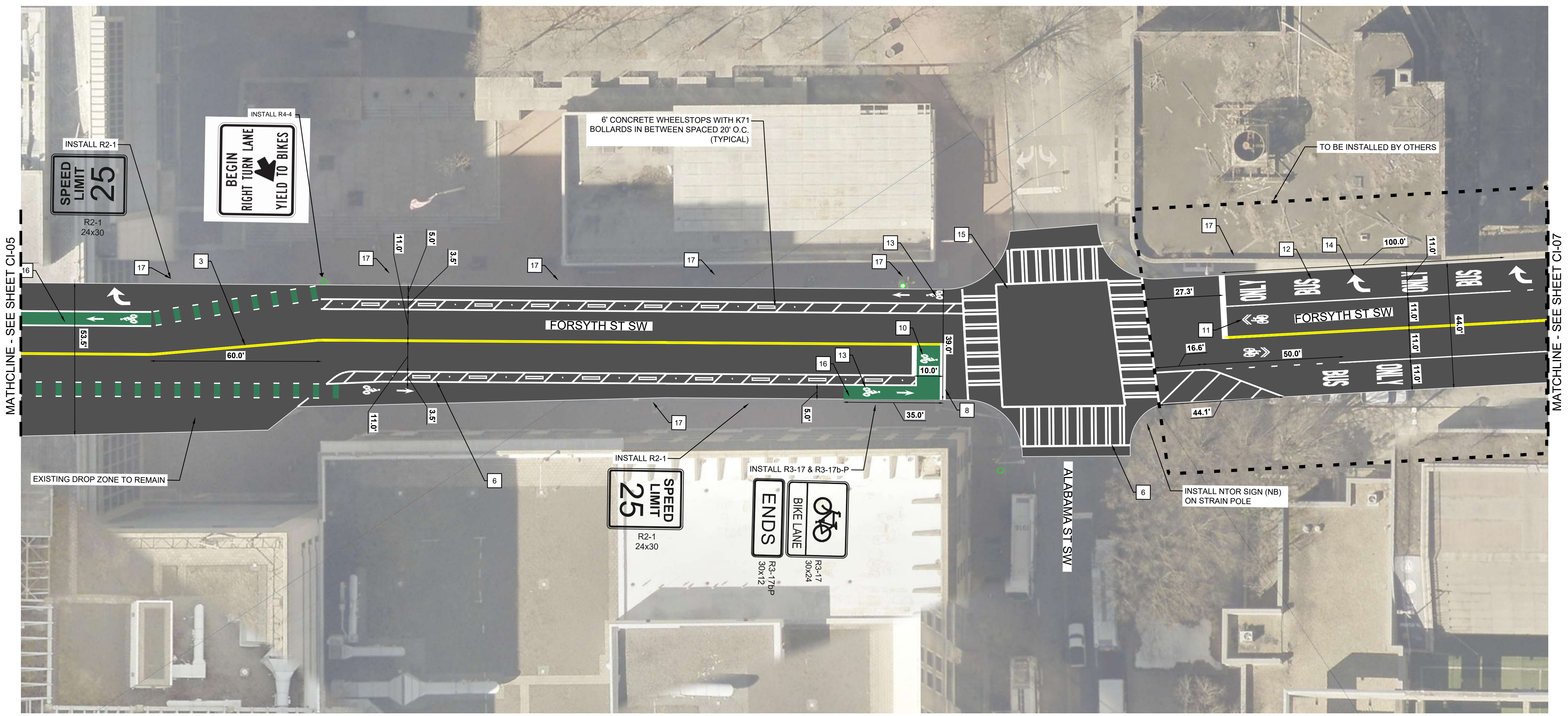
EFFORTS HAVE BEEN MADE TO PRODUCE THIS DOCUMENT USING RECYCLED MATERIALS.
PLEASE CONTINUE THE CYCLE AND PROPERLY RECYCLE ALL UNNECESSARY COPIES.



Severnaya Lungsomnaya
H:\30000\0001\100776.00_P_Forsyth Street Addressed Review\PRODUCTION\CI-05\100776.00_P_Ci-05 CIVIL IMPROVEMENTS_ALT.dwg



FORSYTH STREET MULTIMODAL CORRIDOR
PHASE ONE
ATLANTA DOWNTOWN IMPROVEMENT DISTRICT
FORSYTH STREET SW
CIVIL IMPROVEMENTS PLAN



CONSTRUCTION NOTES (CIVIL):

- | | | | |
|----|--|----|---|
| 01 | INSTALL 5" SOLID WHITE | 10 | INSTALL BIKE SYMBOL PAVEMENT MARKING |
| 02 | INSTALL 5" DASHED WHITE | 11 | INSTALL SHARED LANE PAVEMENT MARKING |
| 03 | INSTALL 5" DOUBLE SOLID YELLOW WITH RAISED PAVEMENT MARKERS SPACED 40" | 12 | INSTALL WORD PAVEMENT MARKING |
| 04 | INSTALL 6" SOLID WHITE | 13 | INSTALL BIKE SYMBOL AND ARROW PAVEMENT MARKING |
| 05 | INSTALL 5" DASHED DOUBLE YELLOW | 14 | INSTALL TURN ARROW PAVEMENT MARKING |
| 06 | INSTALL 8" SOLID WHITE | 15 | INSTALL GREEN MMA CONFLICT PAVEMENT MARKING |
| 07 | INSTALL 12" SOLID WHITE | 16 | INSTALL GREEN BIKE LANE PAVEMENT MARKING |
| 08 | INSTALL 24" SOLID WHITE | 17 | REPLACE PARKING SIGN WITH "NO PARKING BIKE LANE" R7-9 |
| 09 | INSTALL 6" DASHED WHITE | 18 | INSTALL 12" BIKE YIELD MARKINGS |

LEGEND:

- VARIABLE DEPTH MILLING AND OVERLAY BETWEEN TRINITY AVE AND RAILROAD BRIDGE
- MMA GREEN BIKE LANE STRIPING
- SLIP LANE CLOSURE
- FIRE HYDRANT

NOTES:

- K-71 BOLLARDS AND CONCRETE WHEEL STOPS TO BE INSTALLED BY OTHERS (ADID)
- ALL PAVEMENT MARKINGS ON FORSYTH STREET FROM MITCHELL STREET SW TO DR MLK JR DR SW TO BE STANDARD TRAFFIC PAINT



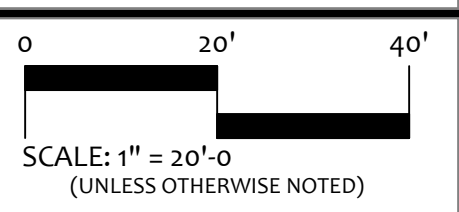
REVISIONS

#	DATE	DESCRIPTION
1		
2		
3		
4		
5		

PROJECT NUMBER: 00ATL_00276.00
RELEASE DATE: 2024.03.04
DR BY: SL
CH BY: BW

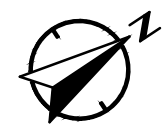
100% SUBMITTAL

This drawing contains specific and proprietary information and is the property of Toole Design Group, LLC. This drawing and the information contained herein may not be scanned, copied, reproduced, modified, published, posted, uploaded, transmitted, or distributed in any way without expressed written consent from Toole Design Group, LLC for the specific project named on this sheet.
© 2021 Toole Design Group, LLC

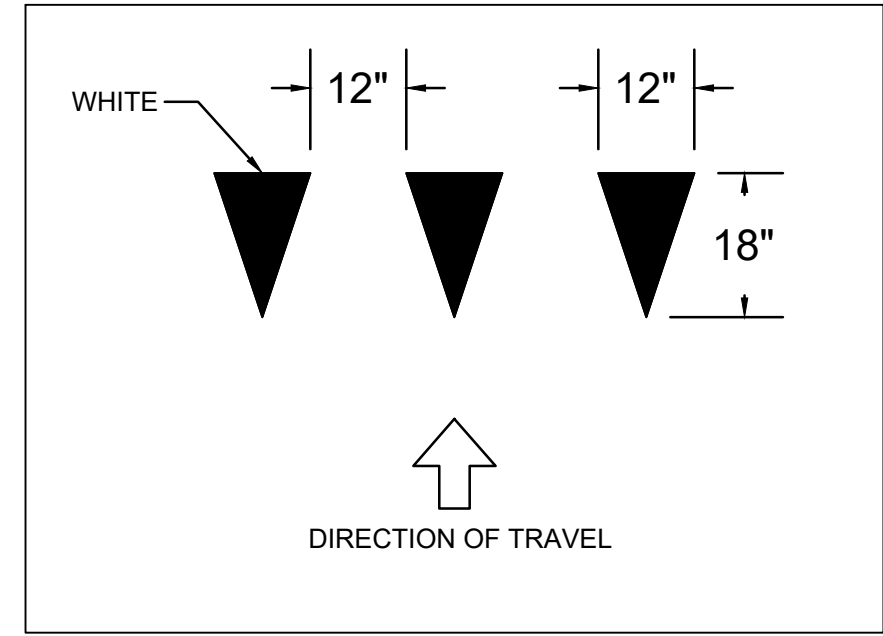
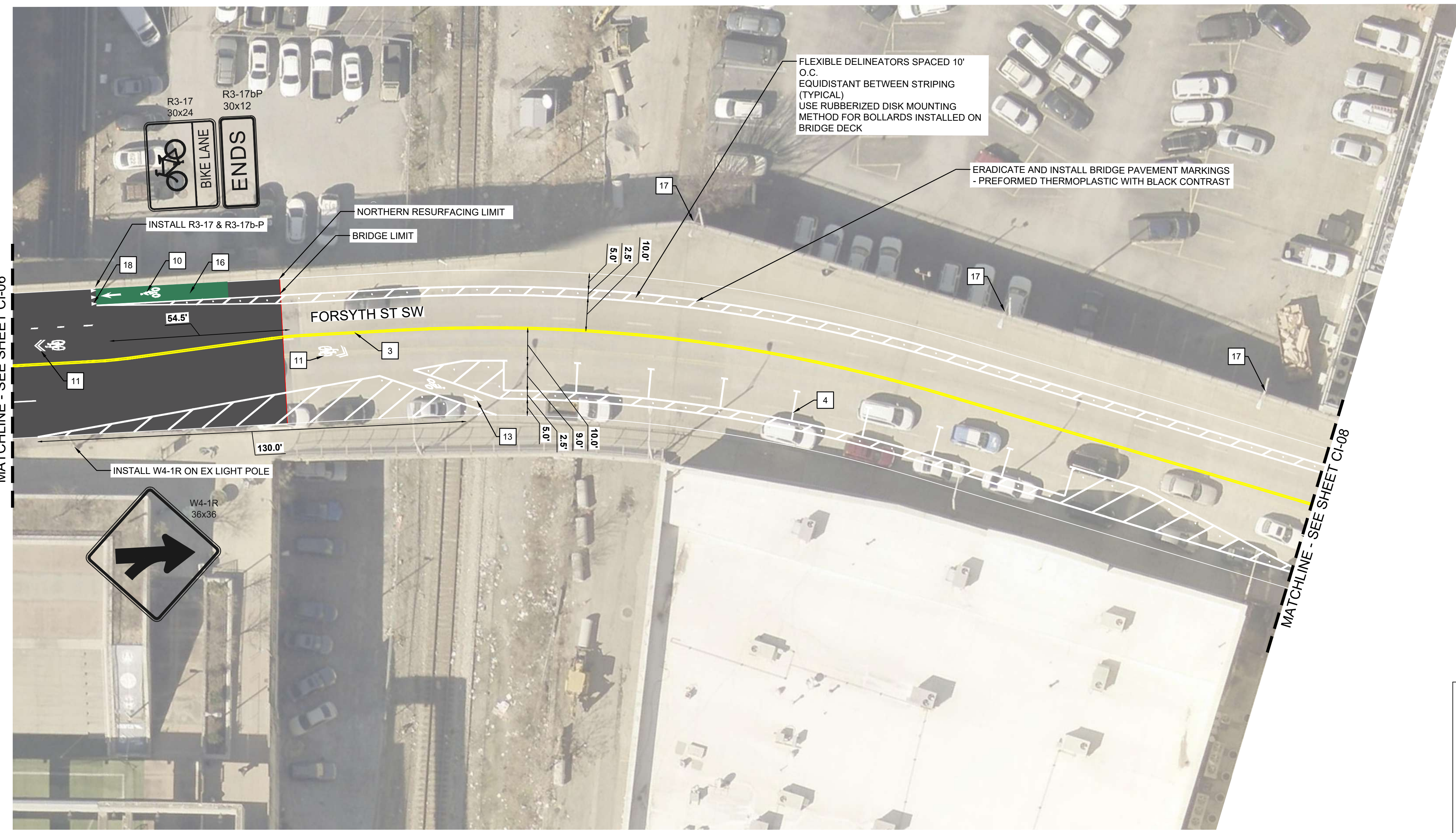


SHEET NUMBER
8 OF 14

DRAWING NUMBER
CI-06



**FORSYTH STREET MULTIMODAL CORRIDOR
PHASE ONE**
ATLANTA DOWNTOWN IMPROVEMENT DISTRICT
FORSYTH STREET SW
CIVIL IMPROVEMENTS PLAN



12" BIKE YIELD MARKING DETAIL

CONSTRUCTION NOTES (CIVIL):

- | | | | |
|----|--|----|---|
| 01 | INSTALL 5" SOLID WHITE | 10 | INSTALL BIKE SYMBOL PAVEMENT MARKING |
| 02 | INSTALL 5" DASHED WHITE | 11 | INSTALL SHARED LANE PAVEMENT MARKING |
| 03 | INSTALL 5" DOUBLE SOLID YELLOW WITH RAISED PAVEMENT MARKERS SPACED 40' | 12 | INSTALL WORD PAVEMENT MARKING |
| 04 | INSTALL 6" SOLID WHITE | 13 | INSTALL BIKE SYMBOL AND ARROW PAVEMENT MARKING |
| 05 | INSTALL 5" DASHED DOUBLE YELLOW | 14 | INSTALL TURN ARROW PAVEMENT MARKING |
| 06 | INSTALL 8" SOLID WHITE | 15 | INSTALL GREEN MMA CONFLICT PAVEMENT MARKING |
| 07 | INSTALL 12" SOLID WHITE | 16 | INSTALL GREEN BIKE LANE PAVEMENT MARKING |
| 08 | INSTALL 24" SOLID WHITE | 17 | REPLACE PARKING SIGN WITH "NO PARKING BIKE LANE" R7-9 |
| 09 | INSTALL 6" DASHED WHITE | 18 | INSTALL 12" BIKE YIELD MARKINGS |

LEGEND:

- | | | | |
|--|--|--|-------------------|
| | VARIABLE DEPTH MILLING AND OVERLAY BETWEEN TRINITY AVE AND RAILROAD BRIDGE | | SLIP LANE CLOSURE |
| | MMA GREEN BIKE LANE STRIPING | | FIRE HYDRANT |

NOTES:

- K-71 BOLLARDS AND CONCRETE WHEEL STOPS TO BE INSTALLED BY OTHERS (ADID)
- ALL PAVEMENT MARKINGS ON FORSYTH STREET FROM MITCHELL STREET SW TO DR MLK JR DR SW TO BE STANDARD TRAFFIC PAINT



EFFORTS HAVE BEEN MADE TO PRODUCE THIS DOCUMENT USING RECYCLED MATERIALS. PLEASE CONTINUE THE CYCLE AND PROPERLY RECYCLE ALL UNNECESSARY COPIES.

Severnini Engineering
H:\30000\00ATL_00276_00_P_Forsyth Street Addressed Review\PRODUCTION\CADD\ANSI\00ATL_00276_00_P_CIVIL IMPROVEMENTS_ALT.dwg
© 2021 Toole Design Group, LLC

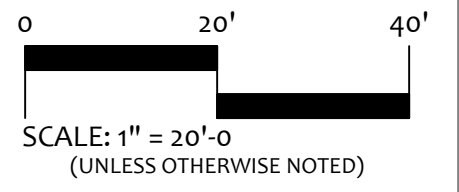
REVISIONS

#	DATE	DESCRIPTION
1		
2		
3		
4		
5		

PROJECT NUMBER: 00ATL_00276.00
RELEASE DATE: 2024.03.04
DR BY: SL
CH BY: BW

100% SUBMITTAL

This drawing contains specific and proprietary information and is the property of Toole Design Group, LLC. This drawing and the information contained herein may not be scanned, copied, reproduced, modified, published, posted, uploaded, transmitted, or distributed in any way without expressed written consent from Toole Design Group, LLC for the specific project named on this sheet.
© 2021 Toole Design Group, LLC



SHEET NUMBER
9 OF 14

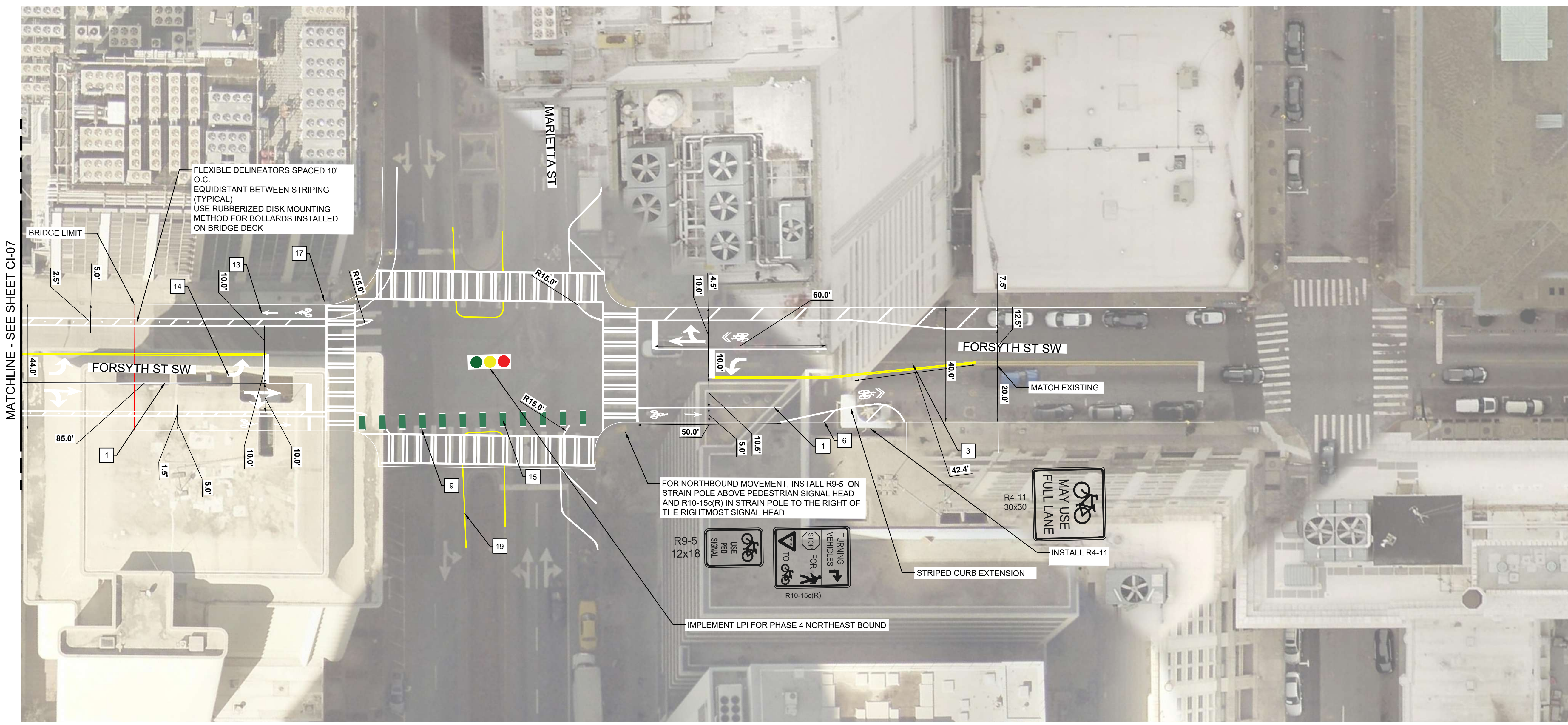
DRAWING NUMBER
CI-07



**FORSYTH STREET MULTIMODAL CORRIDOR
PHASE ONE**
ATLANTA DOWNTOWN IMPROVEMENT DISTRICT
FORSYTH STREET SW
CIVIL IMPROVEMENTS PLAN



EFFORTS HAVE BEEN MADE TO PRODUCE THIS DOCUMENT USING RECYCLED MATERIALS.
PLEASE CONTINUE THE CYCLE AND PROPERLY RECYCLE ALL UNNECESSARY COPIES.



CONSTRUCTION NOTES (CIVIL):

- | | | | |
|----|--|----|---|
| 01 | INSTALL 5" SOLID WHITE | 10 | INSTALL BIKE SYMBOL PAVEMENT MARKING |
| 02 | INSTALL 5" DASHED WHITE | 11 | INSTALL SHARED LANE PAVEMENT MARKING |
| 03 | INSTALL 5" DOUBLE SOLID YELLOW WITH RAISED PAVEMENT MARKERS SPACED 40' | 12 | INSTALL WORD PAVEMENT MARKING |
| 04 | INSTALL 6" SOLID WHITE | 13 | INSTALL BIKE SYMBOL AND ARROW PAVEMENT MARKING |
| 05 | INSTALL 5" DASHED DOUBLE YELLOW | 14 | INSTALL TURN ARROW PAVEMENT MARKING |
| 06 | INSTALL 8" SOLID WHITE | 15 | INSTALL GREEN MMA CONFLICT PAVEMENT MARKING |
| 07 | INSTALL 12" SOLID WHITE | 16 | INSTALL GREEN BIKE LANE PAVEMENT MARKING |
| 08 | INSTALL 24" SOLID WHITE | 17 | REPLACE PARKING SIGN WITH "NO PARKING BIKE LANE" R7-9 |
| 09 | INSTALL 6" DASHED WHITE | 18 | INSTALL 12" BIKE YIELD MARKINGS |
| | | 19 | INSTALL 5" SOLID YELLOW |

LEGEND:

- | | | | |
|--|--|--|-------------------|
| | VARIABLE DEPTH MILLING AND OVERLAY BETWEEN TRINITY AVE AND RAILROAD BRIDGE | | SLIP LANE CLOSURE |
| | MMA GREEN BIKE LANE STRIPING | | FIRE HYDRANT |

NOTES:

- K-71 BOLLARDS AND CONCRETE WHEEL STOPS TO BE INSTALLED BY OTHERS (ADID)
- ALL PAVEMENT MARKINGS ON FORSYTH STREET FROM MITCHELL STREET SW TO DR MLK JR DR SW TO BE STANDARD TRAFFIC PAINT



S:\projects\14000000\14000000.dwg
H:\30000000\14000000.dwg
P:\Forsyth Street Addressed Review\PRODUCTION\CI-07_00_F_Civil IMPROVEMENTS_ALT.dwg

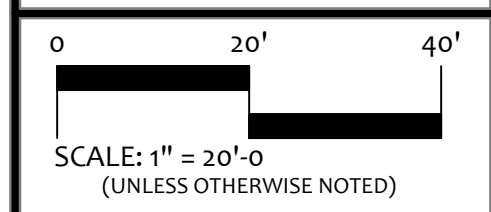
REVISIONS

#	DATE	DESCRIPTION
1		
2		
3		
4		
5		

PROJECT NUMBER: 00ATL_00276.00
RELEASE DATE: 2024.03.04
DR BY: SL
CH BY: BW

100% SUBMITTAL

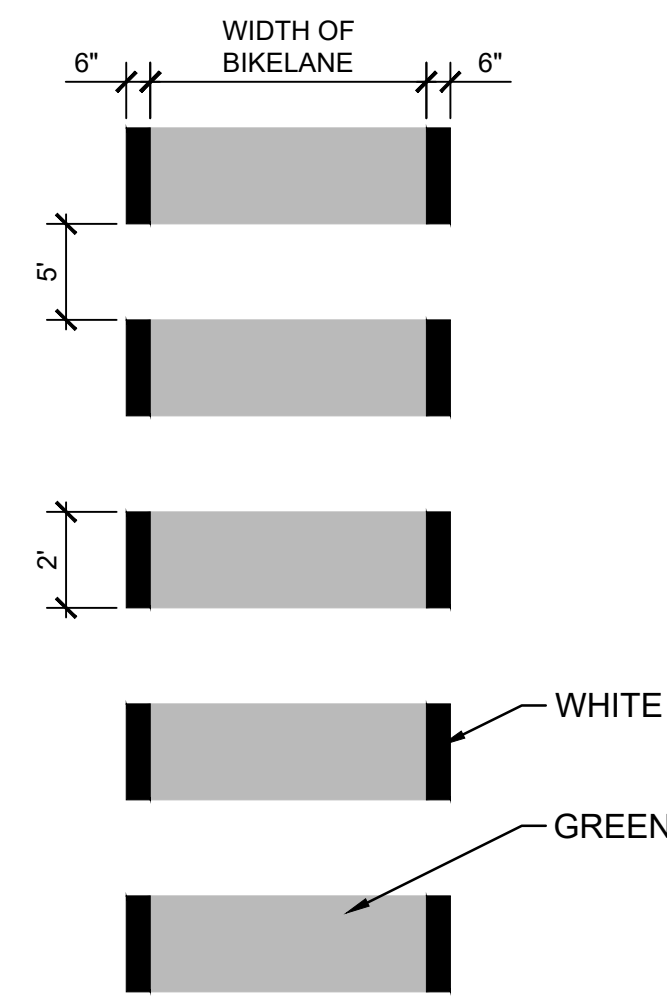
This drawing contains specific and proprietary information and is the property of Toole Design Group, LLC. This drawing and the information contained herein may not be scanned, copied, reproduced, modified, published, posted, uploaded, transmitted, or distributed in any way without expressed written consent from Toole Design Group, LLC for the specific project named on this sheet.
© 2021 Toole Design Group, LLC



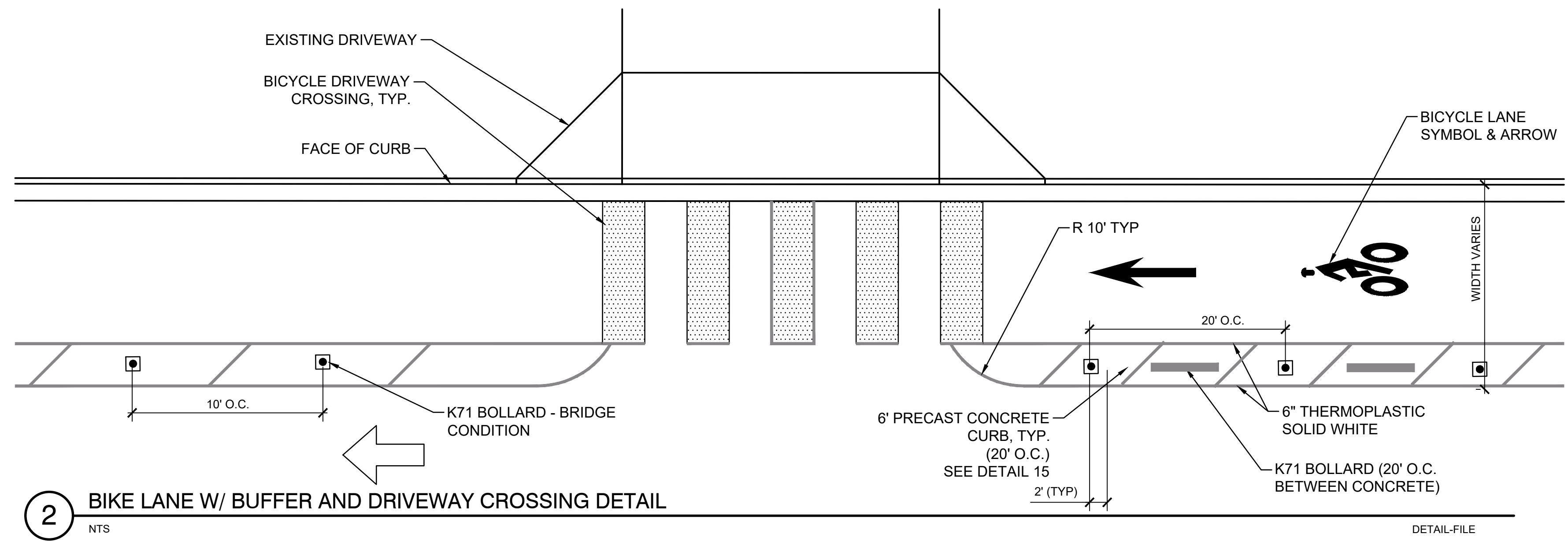
SHEET NUMBER
10 OF 14

DRAWING NUMBER
CI-08

EFFORTS HAVE BEEN MADE TO PRODUCE THIS DOCUMENT USING RECYCLED MATERIALS. PLEASE CONTINUE THE CYCLE AND PROPERLY RECYCLE ALL UNNECESSARY COPIES.

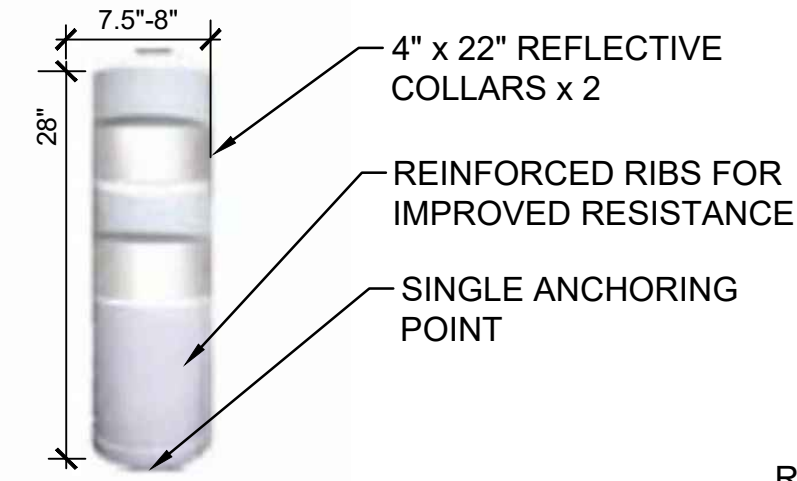


1 BICYCLE INTERSECTION & DRIVEWAY CROSSING
NTS P-CO-C-06

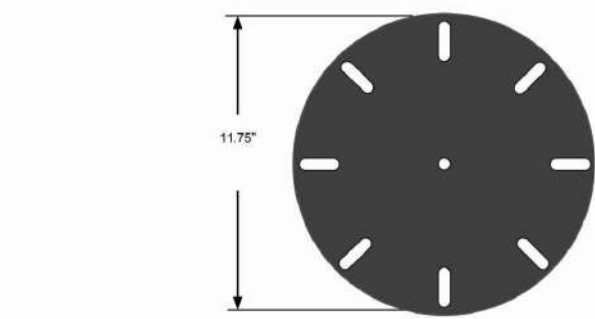


2 BIKE LANE W/ BUFFER AND DRIVEWAY CROSSING DETAIL
NTS

K71 FLEXIBLE TRAFFIC POST WHITE



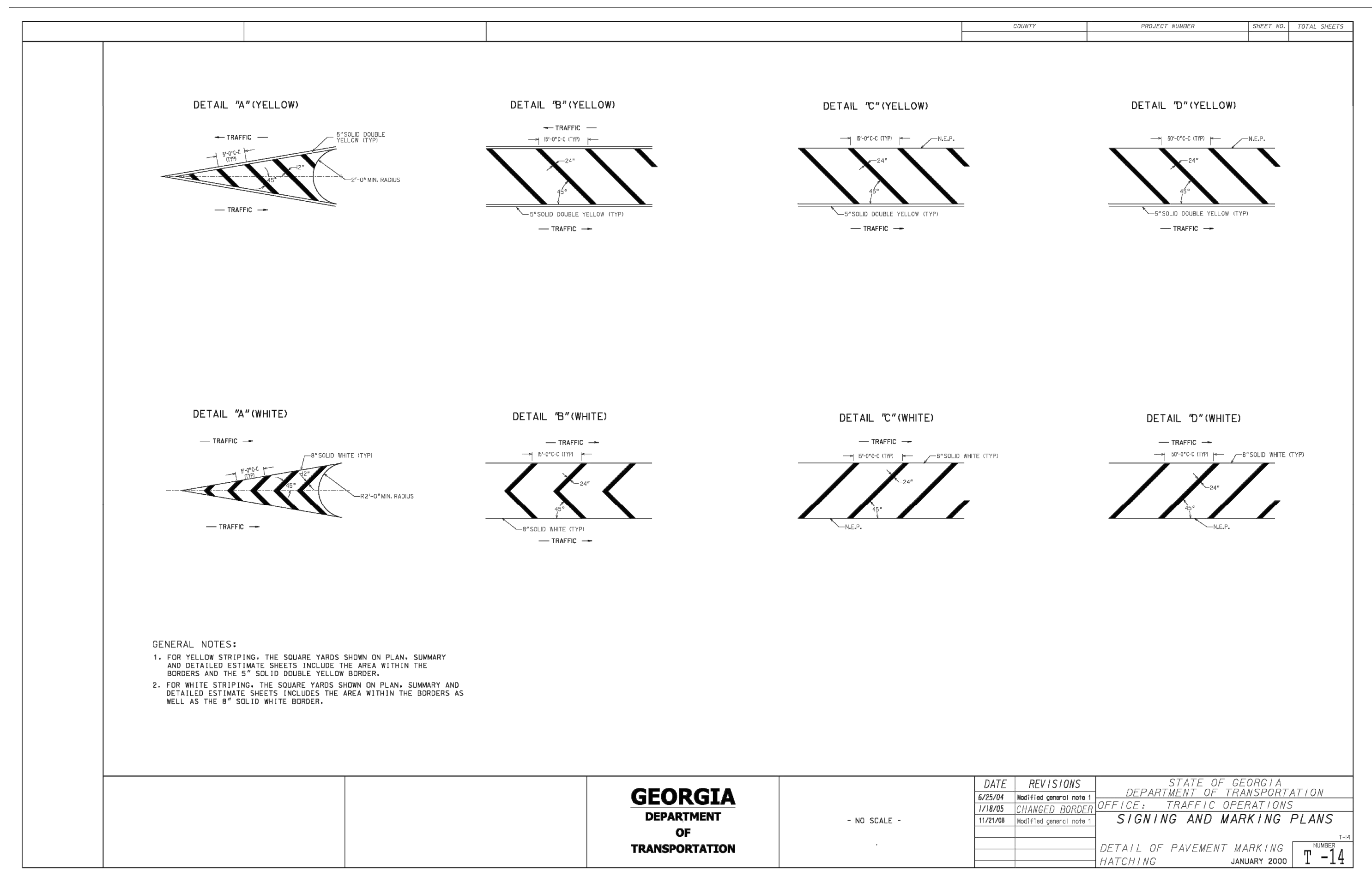
RUBBERIZED DISK MOUNTING METHOD FOR INSTALLATION OF BOLLARDS ON BRIDGE



NOTES:

- SEE SP 636 FOR ADDITIONAL DETAILS
- USE RUBBERIZED DISK MOUNTING METHOD FOR K71 BOLLARDS INSTALLED ON BRIDGE DECK

3 FLEXIBLE DELINEATOR DETAIL
NTS DETAIL-FILE



GENERAL NOTES:
1. FOR YELLOW STRIPING, THE SQUARE YARDS SHOWN ON PLAN, SUMMARY AND DETAILED ESTIMATE SHEETS INCLUDE THE AREA WITHIN THE BORDERS AND THE 6\"/>

4 PAVEMENT MARKING HATCHING DETAIL
T-14

REVISIONS

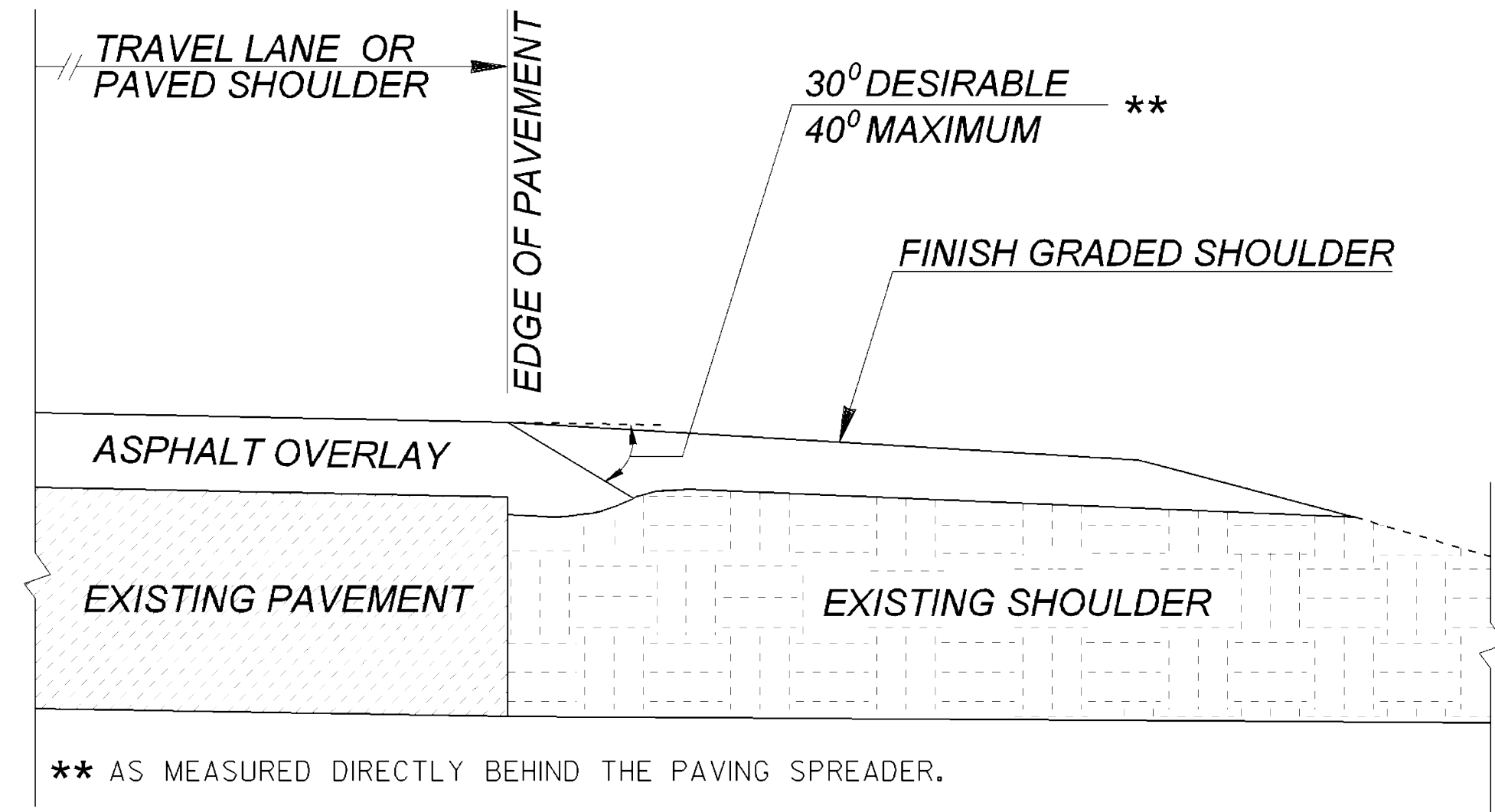
#	DATE	DESCRIPTION
1		
2		
3		
4		
5		

PROJECT NUMBER: 00ATL00276.00
RELEASE DATE: 2024.03.04
DR BY: SL
CH BY: BW

100% SUBMITTAL

This drawing contains specific and proprietary information and is the property of Toole Design Group, LLC. This drawing and the information contained herein may not be scanned, copied, reproduced, modified, published, posted, uploaded, transmitted, or distributed in any way without expressed written consent from Toole Design Group, LLC for the specific project named on this sheet.
© 2021 Toole Design Group, LLC

ASPHALT PAVEMENT - OVERLAY



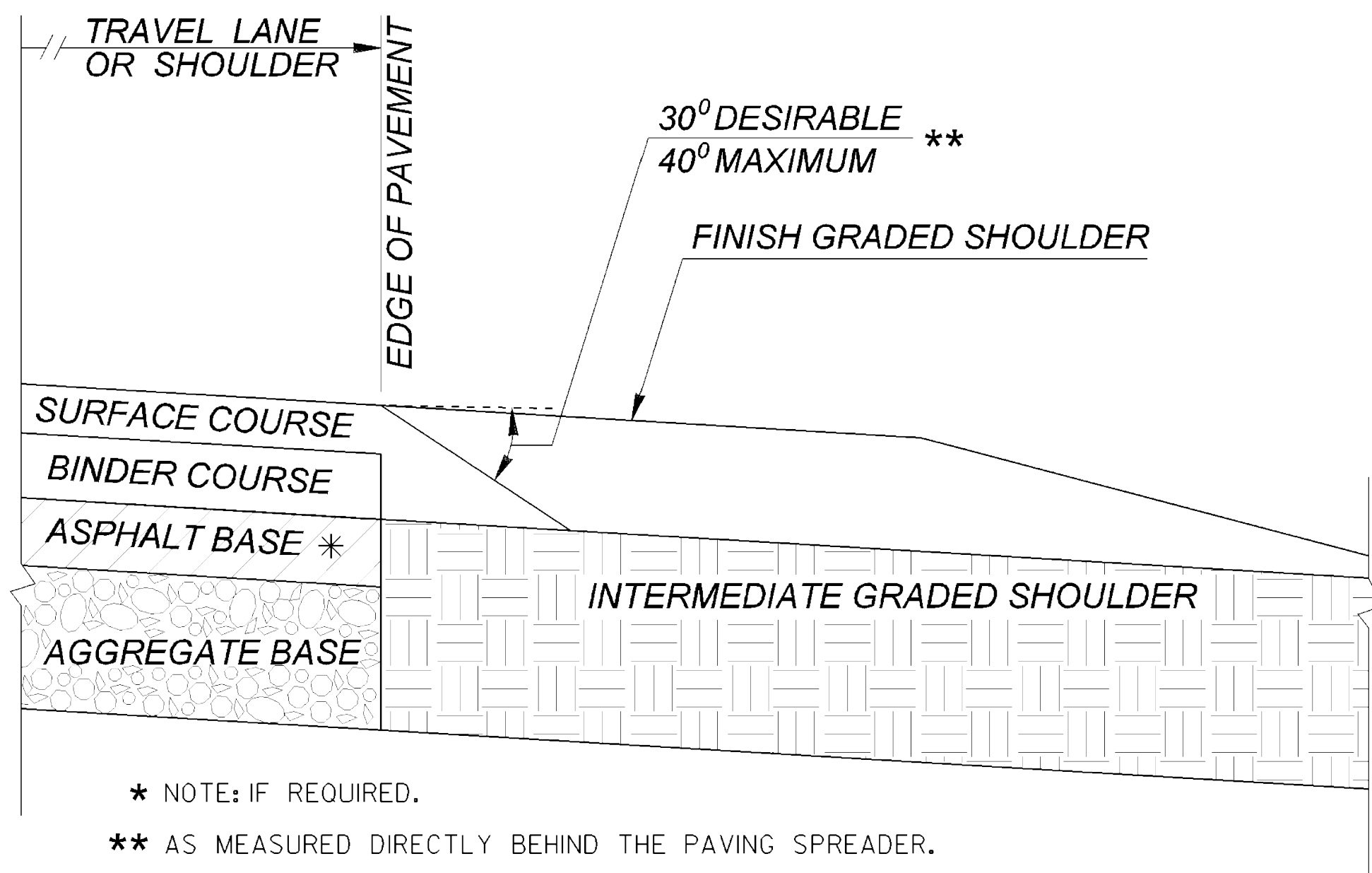
** AS MEASURED DIRECTLY BEHIND THE PAVING SPREADER.

ADDITIONAL QUANTITIES:

DEPTH OF OVERLAY (T), NO RUTTING
 $(T)^2 \text{ (IN.)} \times 0.000441 \text{ TN/IN.-FT} \times \text{LENGTH (FT)} = \text{_____ TN}$

DEPTH OF OVERLAY (T), WITH 1 IN. RUTTING
 $(T)^2 \text{ (IN.)} \times 0.000441 \text{ TN/IN.-FT} \times \text{LENGTH (FT)} + (T) \text{ (IN.)} \times 0.000882 \text{ TN/IN.-FT} \times \text{LENGTH (FT)} = \text{_____ TN}$

ASPHALT PAVEMENT - NEW



* NOTE: IF REQUIRED.

** AS MEASURED DIRECTLY BEHIND THE PAVING SPREADER.

ADDITIONAL QUANTITIES:

SURFACE COURSE PAVING DEPTH (T)
 $(T)^2 \text{ (IN.)} \times 0.000441 \text{ TN/IN.-FT} \times \text{LENGTH (FT)} = \text{_____ TN}$

GENERAL NOTES:

- THE SAFETY EDGE SHALL BE CONSTRUCTED AS AN INTEGRAL OPERATION OF THE ROADWAY PAVEMENT PLACEMENT PROCESS.
- (ASPHALT PAVEMENT)
- USE AN APPROVED MECHANICAL DEVICE THAT WILL:
 - APPLY COMPACTIVE EFFORT TO THE ASPHALT MIXTURE TO ELIMINATE OBJECTABLE VOIDS AS THE MIXTURE PASSES THROUGH THE WEDGE DEVICE.
 - PRODUCE A WEDGE WITH A UNIFORM TEXTURE, SHAPE, AND DENSITY WHILE AUTOMATICALLY ADJUSTING TO VARYING HEIGHTS ENCOUNTERED ALONG THE ROADWAY SHOULDER.
- A SINGLE-PLATE STRIKE-OFF METHOD SHALL NOT BE USED FOR BITUMINOUS PAVING, AS THE SINGLE-PLATE STRIKE-OFF METHOD HAS BEEN FOUND TO PRODUCE A NON-DURABLE EDGE.
- COMPACTION OF THE EDGE SHOULD NOT BE DONE WITH THE FIRST PASS OF THE ROLLER; WITH THE ROLLER STAYING OFF THE EDGE AT LEAST 6 INCHES. THIS IS IN ORDER TO ALLOW THE EDGE MIX TO SLIGHTLY COOL PRIOR TO COMPACTION.
- SHORT SECTIONS OF HANDWORK ARE ALLOWED, WHEN NECESSARY, FOR TRANSITIONS AND TURNOUTS.



EFFORTS HAVE BEEN MADE TO PRODUCE THIS DOCUMENT USING RECYCLED MATERIALS. PLEASE CONTINUE THE CYCLE AND PROPERLY RECYCLE ALL UNNECESSARY COPIES.



S:\Projects\2024\00ATL00276\00_P_Forsyth Street Additional Services\PRODUCTION\00ATL00276_00_P_Notes and Details_ATL.dwg
 Date Plotted: 11/14/2024 10:51:00 AM
 Plotter: HP DesignJet T1200
 Plot Scale: 1:1
 User: jld

REVISIONS

#	DATE	DESCRIPTION
1		
2		
3		
4		
5		

PROJECT NUMBER: 00ATL00276.00
 RELEASE DATE: 2024.03.04
 DR BY: SL
 CH BY: BW

100% SUBMITTAL

This drawing contains specific and proprietary information and is the property of Toole Design Group, LLC. This drawing and the information contained herein may not be scanned, copied, reproduced, modified, published, posted, uploaded, transmitted, or distributed in any way without expressed written consent from Toole Design Group, LLC for the specific project named on this sheet.
 © 2021 Toole Design Group, LLC



EFFORTS HAVE BEEN MADE TO PRODUCE THIS DOCUMENT USING RECYCLED MATERIALS. PLEASE CONTINUE THE CYCLE AND PROPERLY RECYCLE ALL UNNECESSARY COPIES.



Sherrill Longenecker, P.E., Forsyth Street Additional Streetscape Plans (QATL 00276.00), P. Notes and Details, ALT #100

**FORSYTH STREET MULTIMODAL CORRIDOR
 PHASE ONE
 ATLANTA DOWNTOWN IMPROVEMENT DISTRICT
 FORSYTH STREET SW**

REVISIONS		
#	DATE	DESCRIPTION
1		
2		
3		
4		
5		

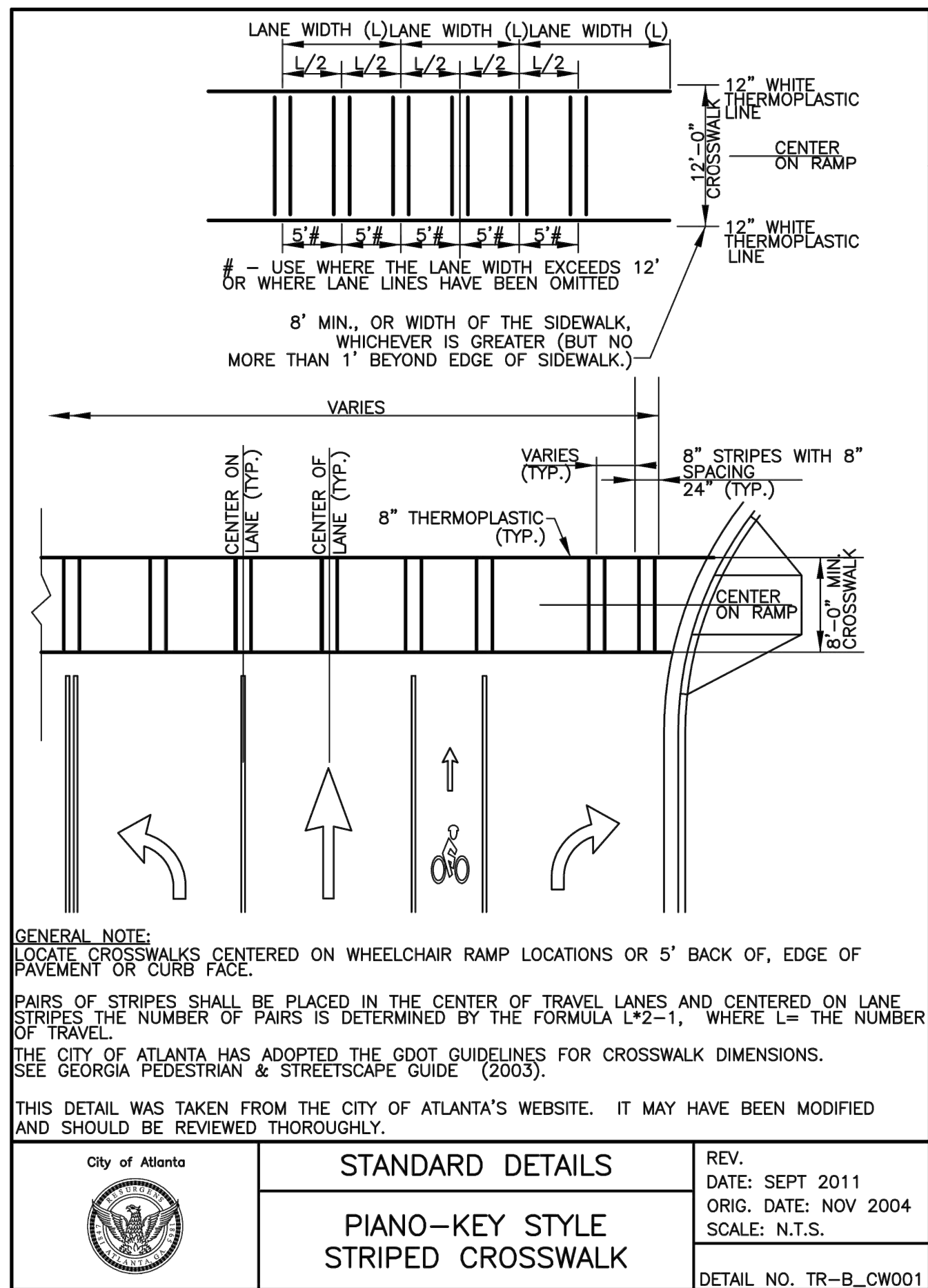
PROJECT NUMBER: Q0ATL.00276.00
 RELEASE DATE: 2024.03.04
 DR BY: SL
 CH BY: BW

100% SUBMITTAL

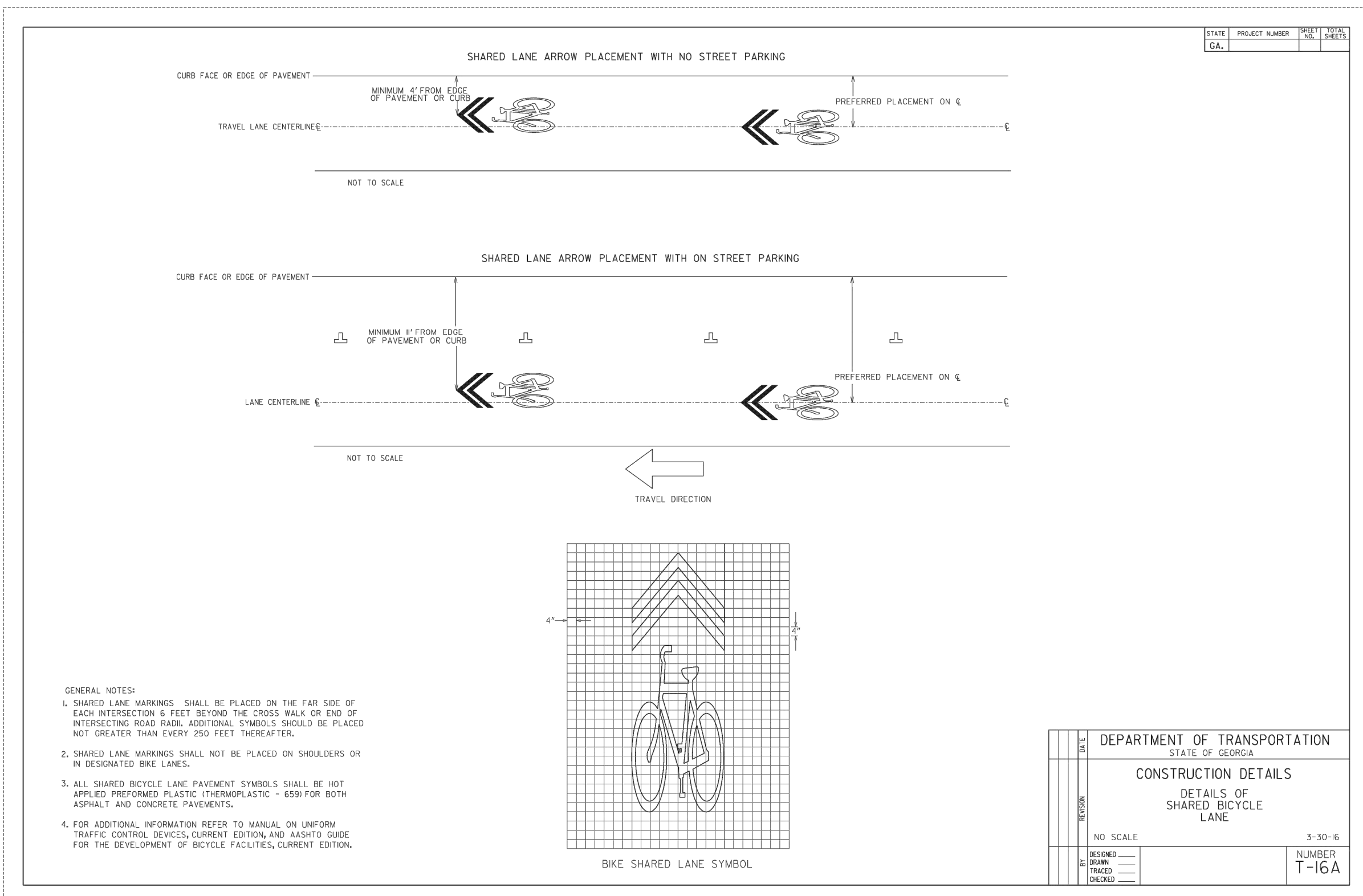
This drawing contains specific and proprietary information and is the property of Toole Design Group, LLC. This drawing and the information contained herein may not be scanned, copied, reproduced, modified, published, posted, uploaded, transmitted, or distributed in any way without expressed written consent from Toole Design Group, LLC for the specific project named on this sheet.

© 2021 Toole Design Group, LLC

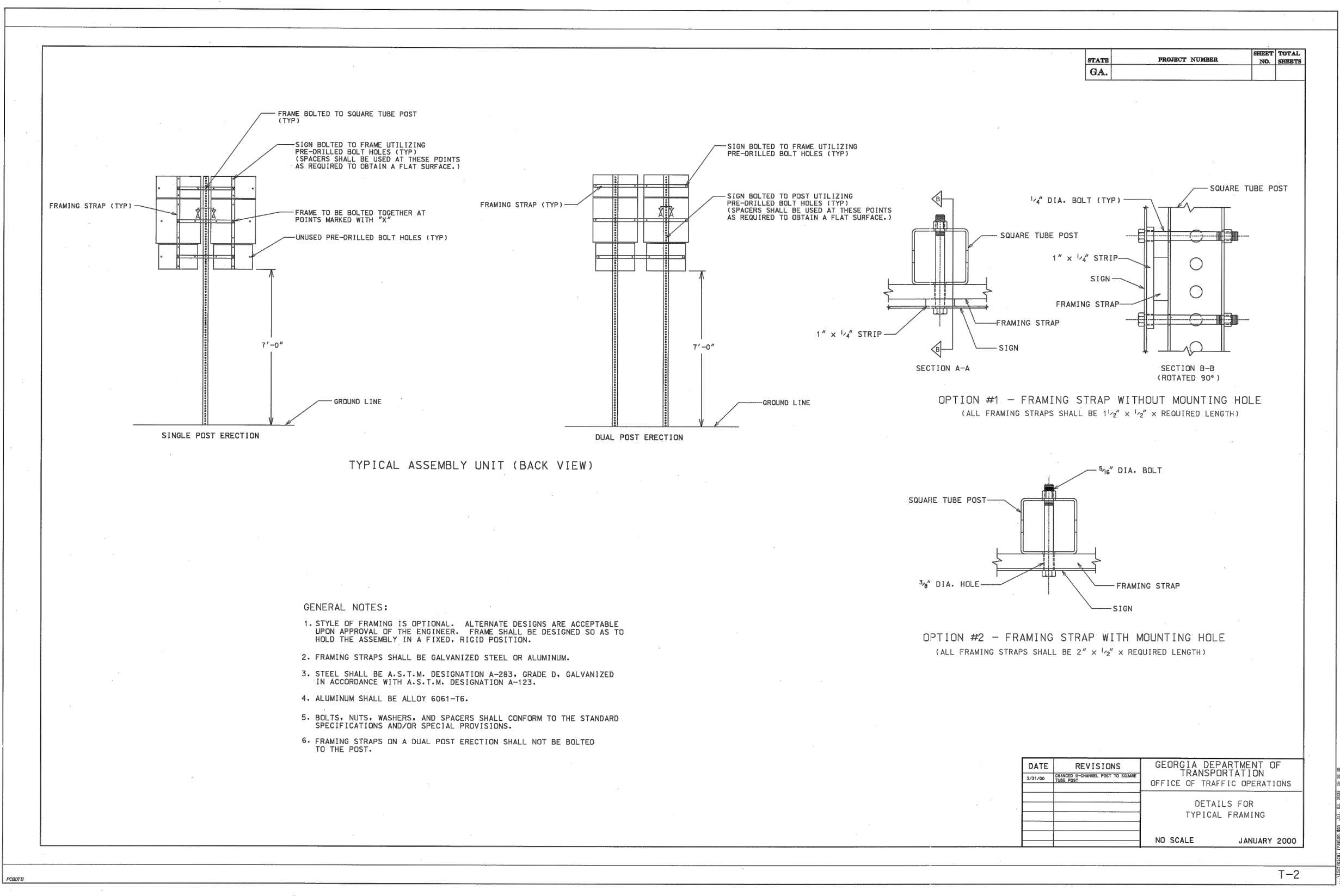
SHEET NUMBER	
13	OF 14
DRAWING NUMBER	
D3	



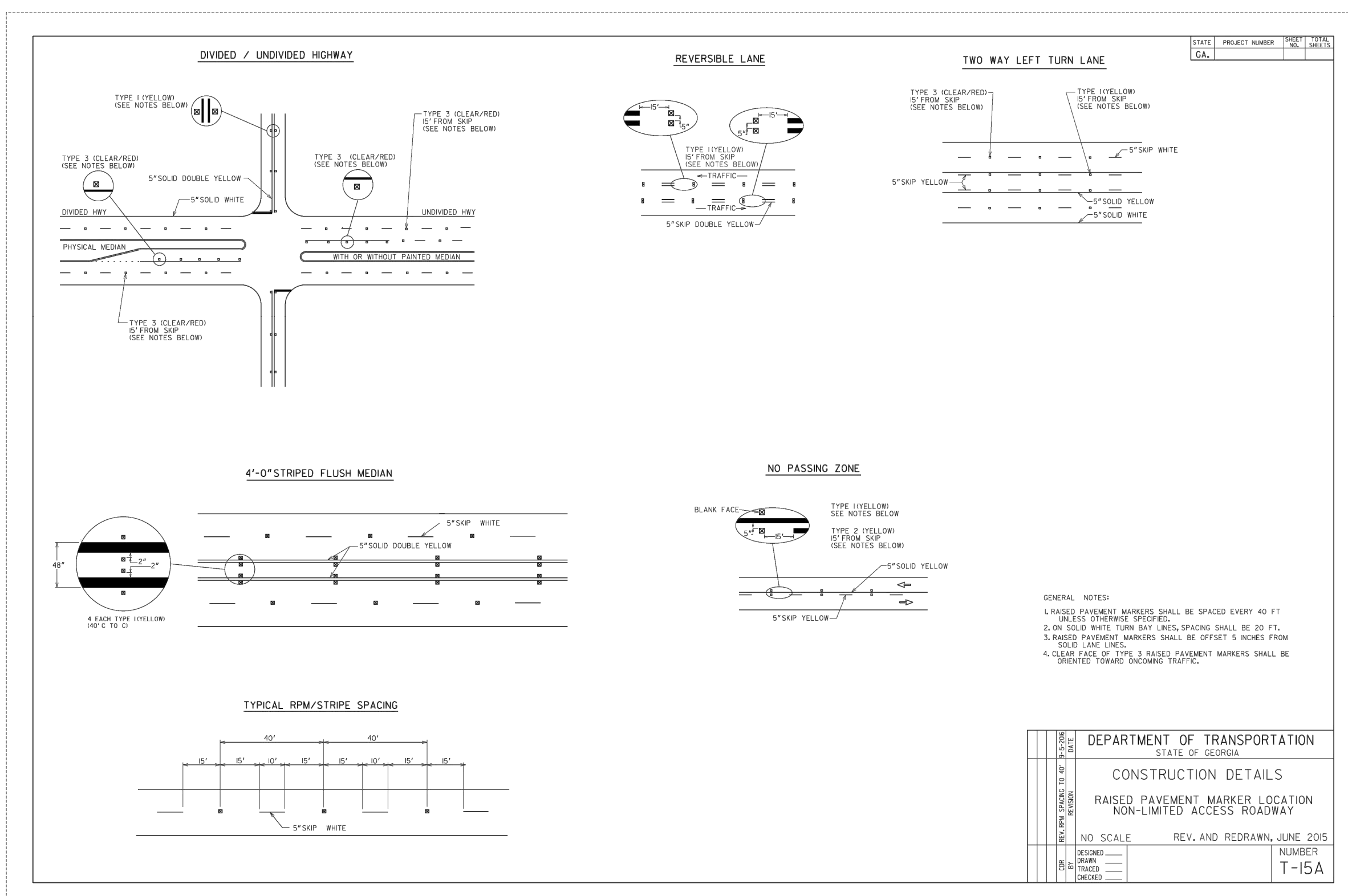
6 CROSSWALK DETAIL
 NTS TR-B_CW001



8 BICYCLE LANE MARKINGS
 NTS T-16A



7 FRAMING OF SIGN POSTS
 NTS T-2



9 RAISED PAVEMENT MARKERS
 NTS T-15A

